

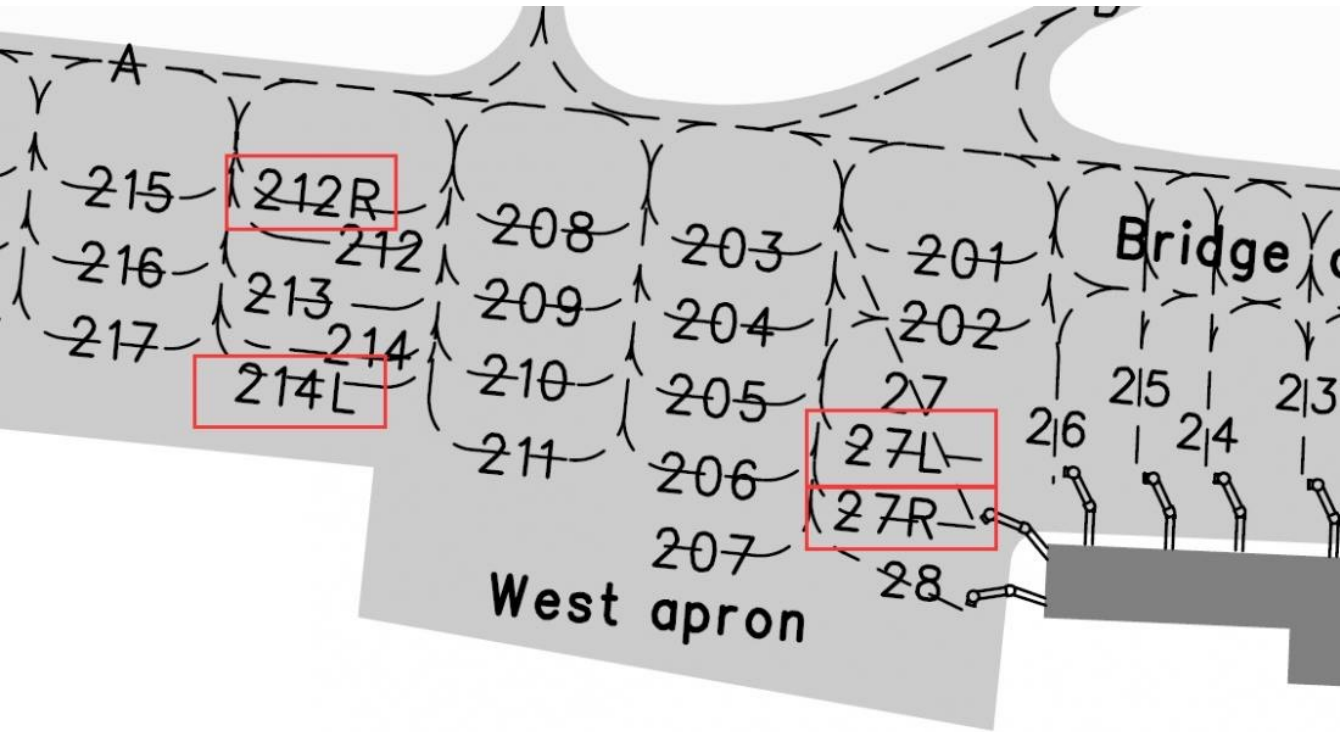
ZTYL Manual



Dalian Zhoushuizi International Airport (IATA: DLC, ICAO: ZYTL) is the airport serving the city of Dalian in Liaoning Province, China. It is located in Ganjingzi District, about 10 km (6 mi) northwest of the city center. In 2014 the airport handled 17,203,640 passengers, making it the busiest airport in Northeast China and the 16th busiest nationwide.

Notice:

- 1、The ILS heading of runway 10 is 100 degrees and the runway heading is 103 degrees. So don't expect Autoland !!!
- 2、Because of the game limit , 27L 27R 214L 212R are shown as below:



3.4 航空器不能同时使用的机位

| 使用机位 | 影响机位 | 使用机位 | 影响机位 |
|-----------|-----------------|------|----------|
| 27 | 27R、27L、201、202 | 212 | 212R、213 |
| 201 或 202 | 27 | 213 | 212、214 |
| 27R 或 27L | 27 | 214L | 214 |
| 212R | 212 | 214 | 213、214L |

GATE_L 27 is 27L ramp

GALE_R 27 is 27R gate

GATE_L 214 is 214L ramp

GALE_R 212 is 212R ramp

3.The weather condition of the airport sometimes may unstable(may with strong tail wind)

Please do not reproduce this scenery without permission. Thank you.

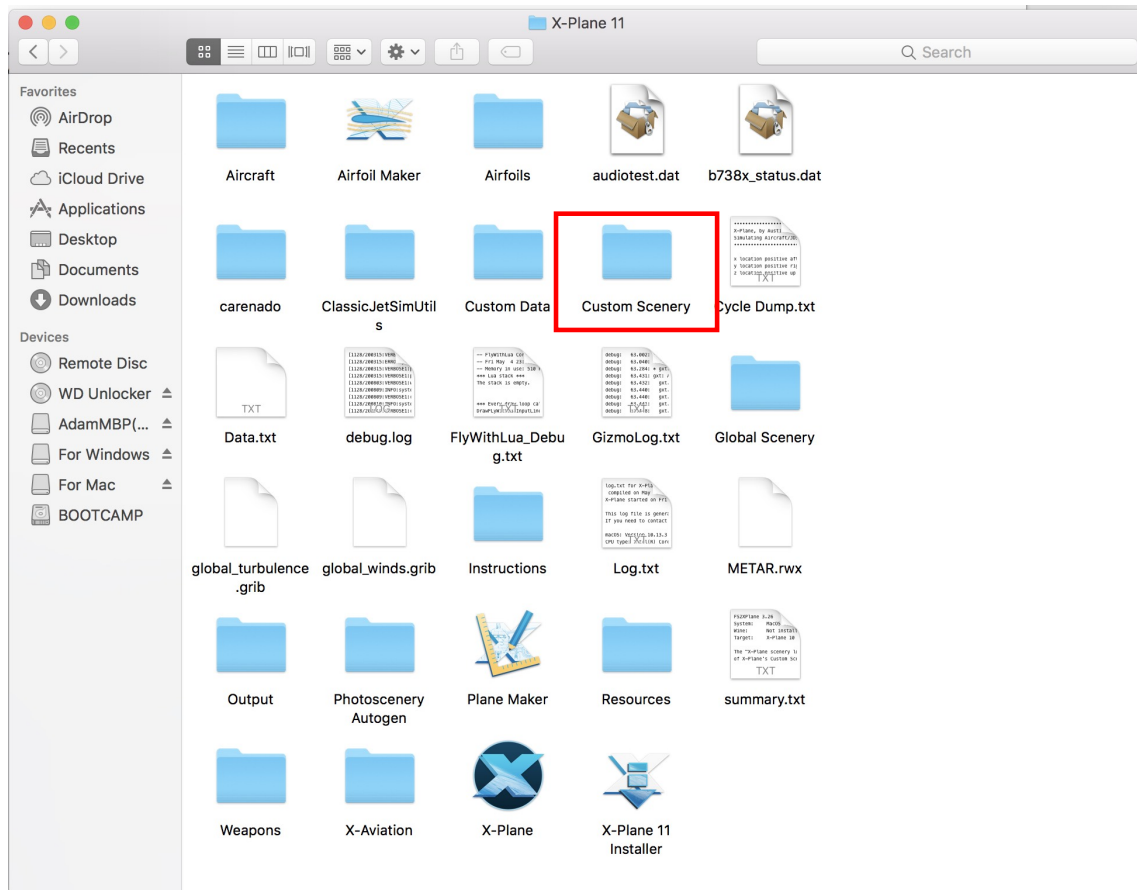
This scenery has already Authorized SinoFSX and VATPRC as muti-fly scenery.

Some detailed texture and mesh are not completed yet. I will update it later.



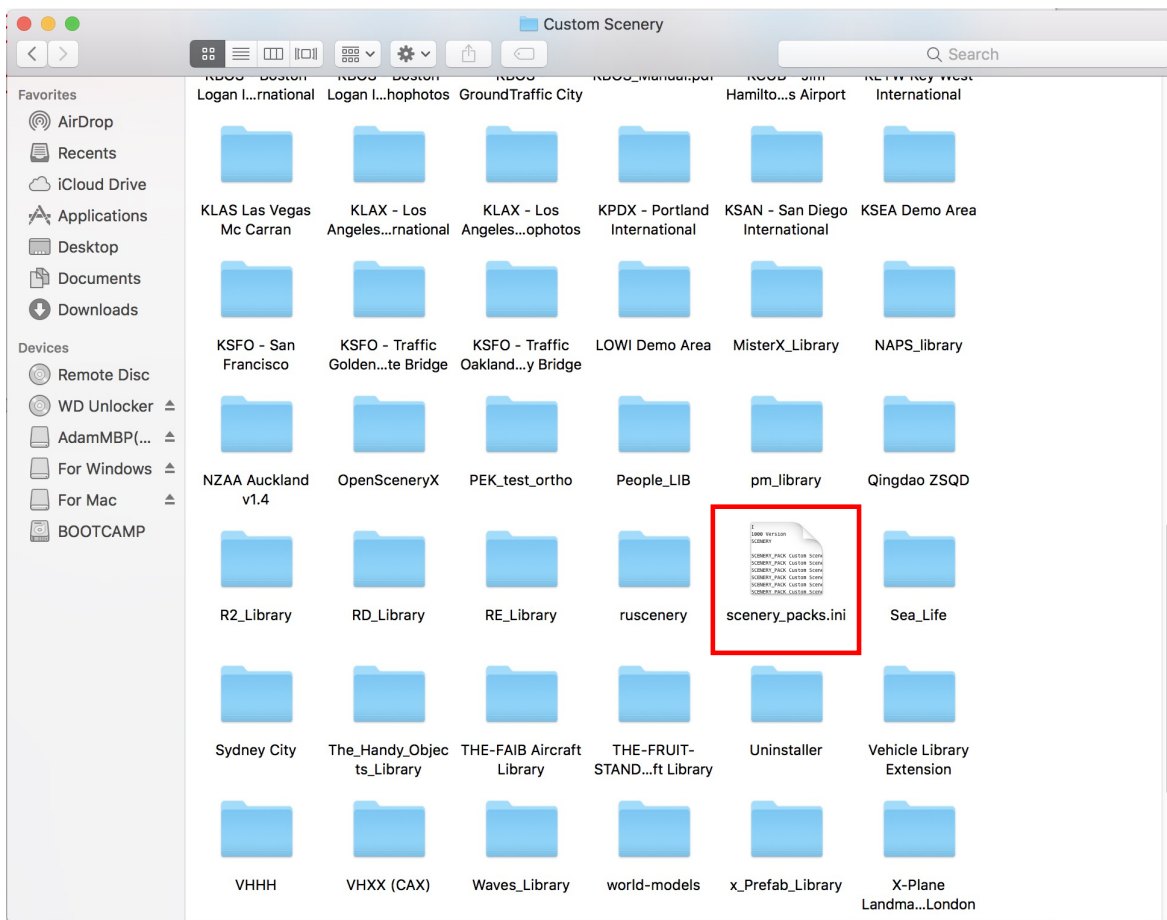
This scenery is made by FSU scenery group. Converted and edited by Adam Liu(1366654). The scenery was according to charts 1805 from CAAC. Models were made by SINO9760

Installation :



1. Unzip three folders inside the zip file to Custom Scenery folder under the path of your X-Plane 11 .

2. Use notepad to open and edit the file inside red block



3. After open it, change the scenery load order as shown:

```
1 I
2 1000 Version
3 SCENERY
4
5 SCENERY_PACK Custom Scenery/Dalian_Zhoushuizi_Init_Airport/
6 SCENERY_PACK Custom Scenery/Dalian_Overlays/
7 SCENERY_PACK Custom Scenery/Dalian_Mesh/
```

4. Enjoy !