

Airport Information

Details for CHANGLE	
City	FUZHOU
State/Province	
Country	CHN
Latitude	N 25° 56' 00.00"
Longitude	E 119° 39' 54.00"
Elevation	46
Longest Runway	11800
Magnetic Variance	W 3.0°
Fuel Type	JET A fuel is available
Oxygen	Oxygen facilities are unavailable.
Repair Facility	Repair facilities are unavailable
Landing Fee	Unknown.
Jet Start Unit	A starting unit is not available at the airport.
Precision Approach	Availability is Unknown.
Beacon Light	A beacon light is available.
Customs Facilities	Customs are available without restriction
Usage Type	Airport/Heliport is open to the public.
Time Zone Conversion	-8:00=UTC
Daylight Savings	Airport observes daylight savings time
Change Notices Available	6

Terminal Chart Change Notices

1. GENERAL

1.1. ATIS

ATIS 126.4

1.2. RWY OPERATIONS

RNAV flight procedures should be conducted only after ATC clearance. Flight crew shall inform APP or TWR on first contact if RNAV flight procedures could not be conducted.

1.3. TAXI PROCEDURES

1.3.1. FOLLOW-ME/TOWING SERVICE

Follow-me vehicle and towing service are available via Apron Control.

1.3.2. TAXI INSTRUCTIONS

ACFT taxiing West of TWY B (inclusive) shall comply with TWR instructions.

Taxiing speed shall not exceed 8KT / 15 kmh for ACFT with wingspan of 213' / 65m or more taxiing along TWY B between B8 and B9.

1.4. PARKING INFORMATION

ACFT parking/docking on stand-off stand, VIP flight parking stand, cargo ACFT parking stand or maintenance parking stand will be guided by marshaller for entry/exit.

Stands 1 thru 32 are push-back.

1.5. OTHER INFORMATION

Birds.

RWY 21 right-hand circuit.

2. ARRIVAL

2.1. TAXI PROCEDURES

2.1.1. TAXI ROUTES FOR A340-600, B747-8 AND B777-300

- Arriving on RWY 03: TWY A9 or A10 - A - B4 - Apron.
When entering TWY A from A9 or A10 and B4 from A, ACFT shall offset TWY centerline while turning and apply a bigger turn radius.
- Arriving on RWY 21: TWY A1 or A2 - A - B4 - Apron.
When entering TWY A from A1 or A2 and B4 from A, ACFT shall offset TWY centerline while turning and apply a bigger turn radius.

2.1.2. TAXI CLEARANCE

- Landing ACFT shall contact TWR for taxi clearance.
- Follow the Follow-me car or contact TWR after vacating RWY.
- Contact Apron to obtain parking stand before entering apron.

3. DEPARTURE

3.1. START-UP, PUSH-BACK AND TAXI PROCEDURES

3.1.1. ENGINE RUN-UPS

Engine run-ups are subject to Apron Control clearance and may only be carried out at a designated location. Fast engine run-ups near boarding bridges or on apron are strictly forbidden.

Engine run-ups on South apron are available for ACFT with wingspan of 171' / 52m or less, towed along A-E to South apron, then pushed back until nose to North.

3.1.2. CLEARANCE DELIVERY

- Contact GND for start-up clearance after ACFT is ready.
- Contact Apron for push-back clearance upon receiving start-up clearance.
- Contact Apron for taxi clearance on apron after start-up.
- Contact TWR before entering into TWY to obtain further clearance.

3.1.3. PUSH-BACK PROCEDURE

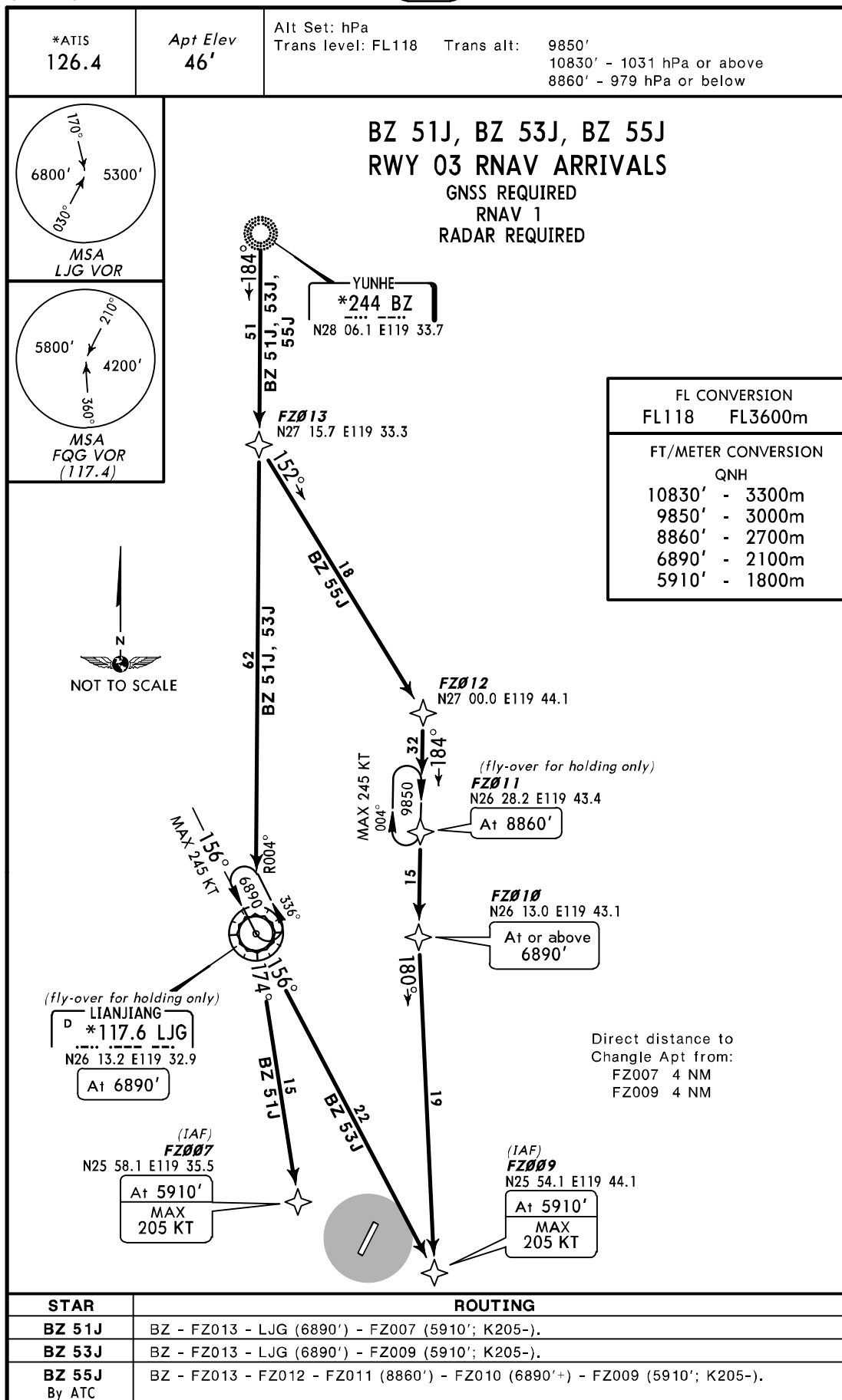
Push-back of ACFT on own power is strictly forbidden without Apron Control clearance.

3.1.4. TAXI ROUTES FOR A340-600, B747-8 AND B777-300

- Departing on RWY 03: Apron - TWY B4 - A - A1 - RWY 03.
When entering TWY A from B4 and A1 from A, ACFT shall offset TWY centerline while turning and apply a bigger turn radius.
- Departing on RWY 21: Apron - TWY B4 - A - A10 - RWY 21.
When entering TWY A from B4 and A10 from A, ACFT shall offset TWY centerline while turning and apply a bigger turn radius.

ZSFZ/FOC
CHANGLE

JEPPESEN FUZHOU, PR OF CHINA
8 AUG 14 10-2 Eff 20 Aug 1600Z RNAV STAR

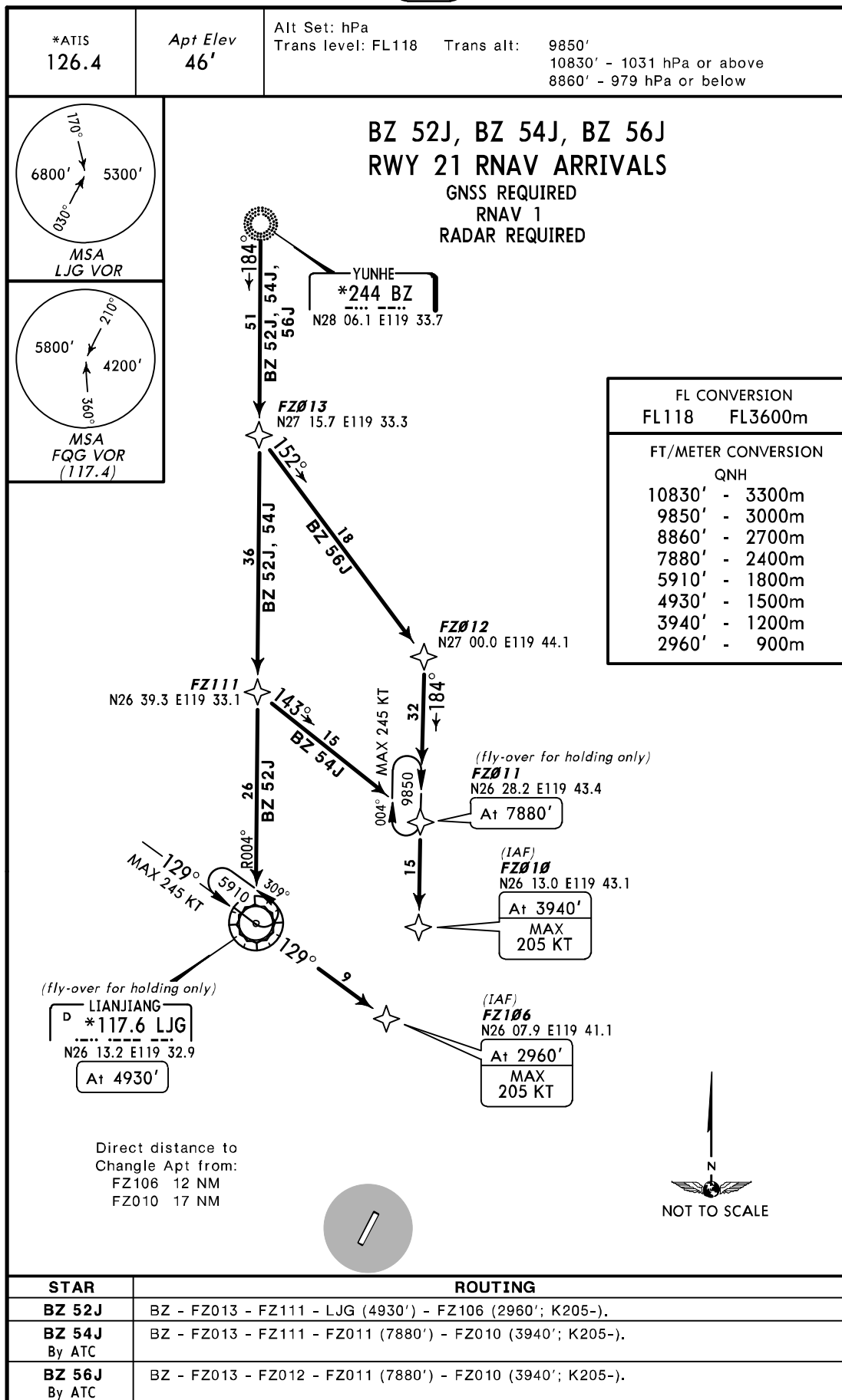


CHANGES: Waypoint depiction.

© JEPPESEN, 2013, 2014. ALL RIGHTS RESERVED.

ZSFZ/FOC
CHANGLE

JEPPESEN FUZHOU, PR OF CHINA
8 AUG 14 (10-2A) Eff 20 Aug 1600Z RNAV STAR



CHANGES: Waypoint depiction.

© JEPPESEN, 2013, 2014. ALL RIGHTS RESERVED.

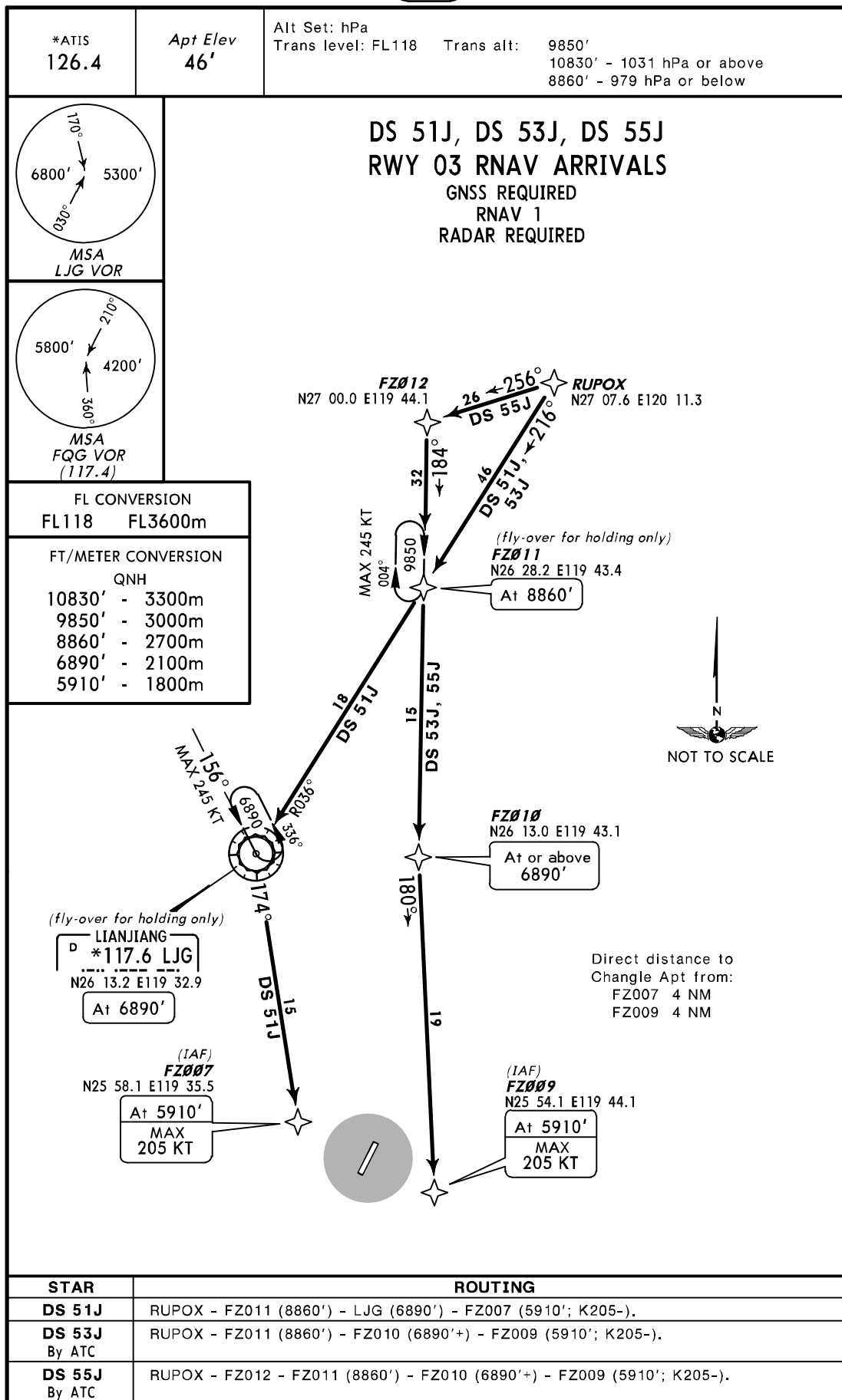
ZSFZ/FOC
CHANGLE

JEPPESEN
8 AUG 14 10-2B

FUZHOU, PR OF CHINA

Eff 20 Aug 1600Z

RNAV STAR



CHANGES: Waypoint depiction.

© JEPPESEN, 2013, 2014. ALL RIGHTS RESERVED.

ZSFZ/FOC
CHANGLE

JEPPESEN

FUZHOU, PR OF CHINA

8 AUG 14

10-2C

Eff 20 Aug 1600Z

RNAV STAR

*ATIS
126.4

Apt Elev
46'

Alt Set: hPa

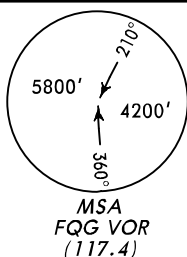
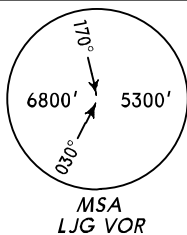
Trans level: FL118

Trans alt:

9850'

10830' - 1031 hPa or above

8860' - 979 hPa or below



FL CONVERSION
FL118 FL3600m

FT/METER CONVERSION

QNH

10830' - 3300m
9850' - 3000m
8860' - 2700m
7880' - 2400m
5910' - 1800m
4930' - 1500m
3940' - 1200m
2960' - 900m

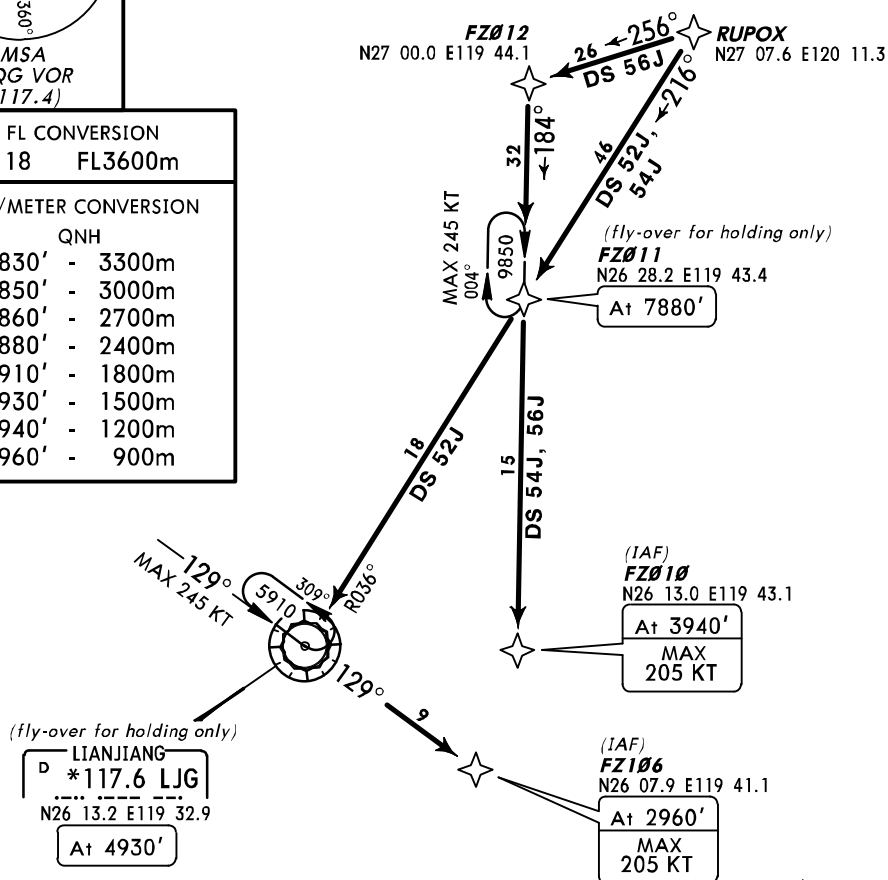
DS 52J, DS 54J, DS 56J RWY 21 RNAV ARRIVALS

GNSS REQUIRED

RNAV 1

RADAR REQUIRED

BY ATC



Direct distance to
Changle Apt from:
FZ106 12 NM
FZ010 17 NM



STAR

ROUTING

DS 52J	RUPOX - FZ011 (7880') - LYG (4930') - FZ106 (2960'; K205-).
DS 54J	RUPOX - FZ011 (7880') - FZ010 (3940'; K205-).
DS 56J	RUPOX - FZ012 - FZ011 (7880') - FZ010 (3940'; K205-).

CHANGES: Waypoint depiction.

© JEPPESEN, 2013, 2014. ALL RIGHTS RESERVED.

ZSFZ/FOC
CHANGLE

JEPPESEN

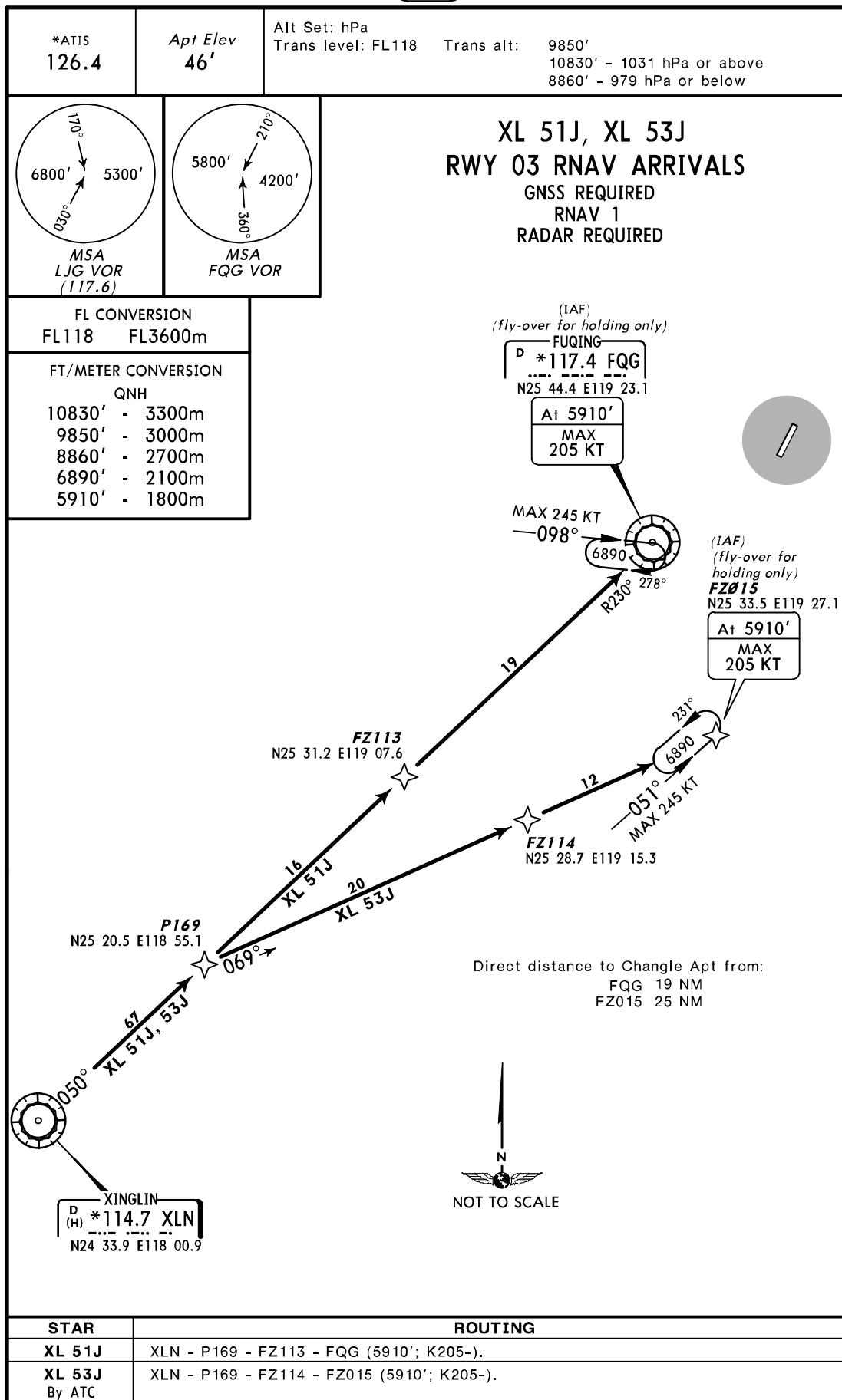
FUZHOU, PR OF CHINA

8 AUG 14

(10-2D)

Eff 20 Aug 1600Z

RNAV STAR



CHANGES: Waypoint depiction.

© JEPPESEN, 2013, 2014. ALL RIGHTS RESERVED.

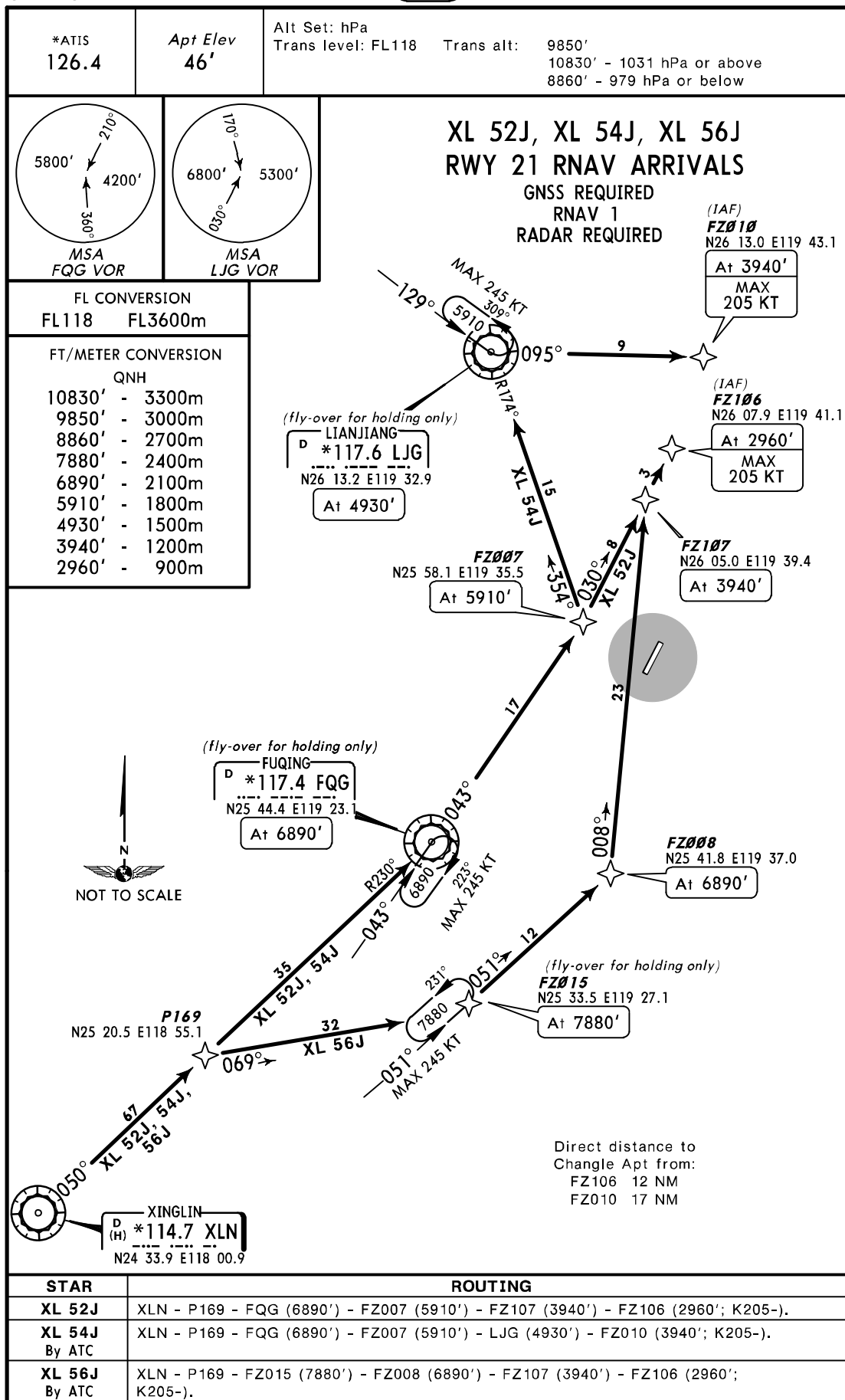
ZSFZ/FOC
CHANGLE

JEPPESEN
8 AUG 14 10-2E

FUZHOU, PR OF CHINA

Eff 20 Aug 1600Z

RNAV STAR



CHANGES: Waypoint depiction.

© JEPPESEN, 2013, 2014. ALL RIGHTS RESERVED.

ZSFZ/FOC
CHANGLE

JEPPESEN
6 SEP 13 10-2F Eff 19 Sep

FUZHOU, PR OF CHINA

STAR

*ATIS
126.4

Apt Elev
46'

Alt Set: hPa
Trans level: FL118 Trans alt: 9850'
10830' - 1031 hPa or above
8860' - 979 hPa or below

**FQG 01A, LJG 01A, LJG 02A
RWY 03 ARRIVALS**
~~SPEED~~ INITIAL APPROACH MAX 205 KT

YUNHE
*244 BZ
N28 06.1 E119 33.7

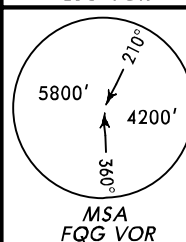
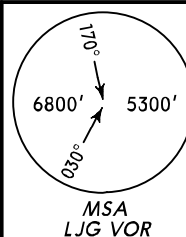
LIANJIANG
D *117.6 LJG
N26 13.2 E119 32.9
Between
7880' & 6890'

FL CONVERSION
FL118 FL3600m

FT/METER CONVERSION
QNH
10830' - 3300m
9850' - 3000m
8860' - 2700m
7880' - 2400m
6890' - 2100m
5910' - 1800m

(IAF)
D16.0 LJG
N25 57.2 E119 31.0
At 6890'

Direct distance to Changle Apt from:
D16.0 LJG 8 NM
FQG 19 NM



NOT TO SCALE

① Deviation to west
is not permitted.

(IAF)
FUZHOU
D (L) *116.8 FOC
N25 56.6 E119 39.8
At 5910'

(IAF)
FUQING
D *117.4 FQG
N25 44.4 E119 23.1
At 5910'

**HOLDING OVER
FOC**



XINGLIN
D (H) *114.7 XLN
N24 33.9 E118 00.9

CHANGES: New chart (STARs transferred & revised).

© JEPPESEN, 2013. ALL RIGHTS RESERVED.

ZSFZ/FOC
CHANGLE

JEPPESEN
6 SEP 13 (10-2G)

FUZHOU, PR OF CHINA

Eff 19 Sep

STAR

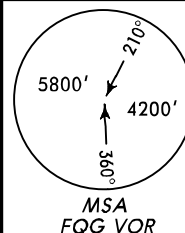
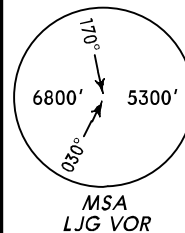
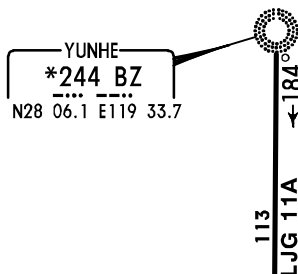
*ATIS
126.4

Apt Elev
46'

Alt Set: hPa
Trans level: FL118 Trans alt: 9850'
10830' - 1031 hPa or above
8860' - 979 hPa or below

FQG 11A, LJG 11A RWY 21 ARRIVALS

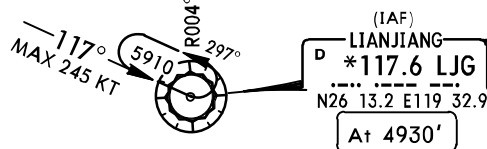
SPEED: INITIAL APPROACH MAX 205 KT



FL CONVERSION
FL118 FL3600m

FT/METER CONVERSION

QNH	
10830'	- 3300m
9850'	- 3000m
8860'	- 2700m
7880'	- 2400m
6890'	- 2100m
5910'	- 1800m
4930'	- 1500m

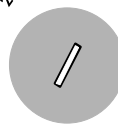


Direct distance to Changle Apt from:
D20.0 FQG 6 NM
LJG 18 NM

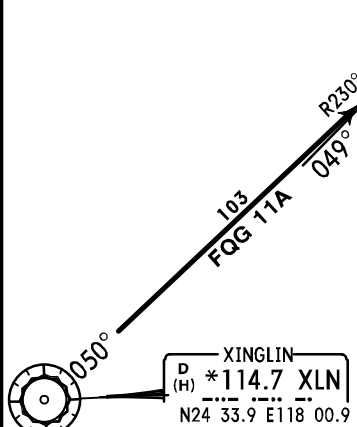
(IAF)
D20.0 FQG
N26 01.0 E119 35.5
At 4930'

D15.0 FQG
N25 56.9 E119 32.4
At 6890'

5 MAX 245 KT
5910 217°



FUQING
D *117.4 FQG
N25 44.4 E119 23.1
Between 7880' & 6890'



CHANGES: New chart (STARs transferred & revised).

© JEPPESEN, 2013. ALL RIGHTS RESERVED.

RNAV SID

RNAV SID

You created this PDF from an application that is not licensed to print to novaPDF printer (<http://www.novapdf.com>)

ZSFZ/FOC
CHANGLE

JEPPESEN
4 APR 14 10-3B

FUZHOU, PR OF CHINA

RNAV SID

Apt Elev
46'

Trans level: FL118 Trans alt: 9850'
10830' - 1031 hPa or above
8860' - 979 hPa or below

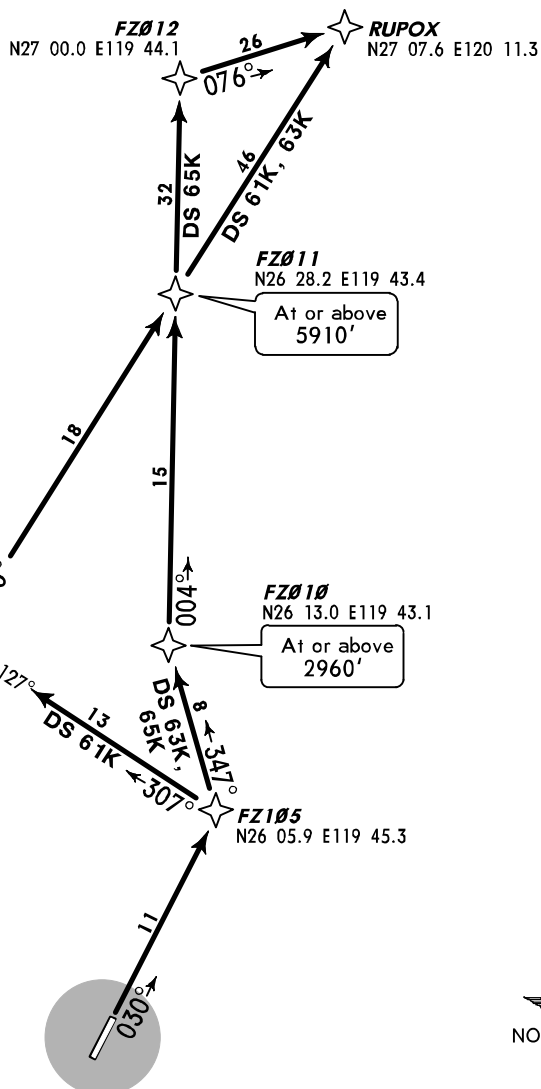
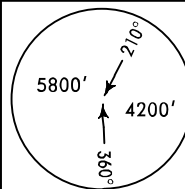
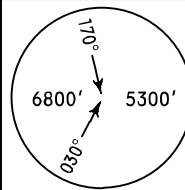
DS 61K, DS 63K, DS 65K
RWY 03 RNAV DEPARTURES
GNSS REQUIRED
RNAV 1
RADAR REQUIRED

FT/METER CONVERSION

QNH

2960' - 900m
4930' - 1500m
5910' - 1800m
8860' - 2700m
9850' - 3000m
10830' - 3300m

FL CONVERSION
FL118 FL3600m



LIANJIANG
D *117.6 LJG
N26 13.2 E119 32.9
At 4930'

At or above
5910'

FZ010
N26 13.0 E119 43.1
At or above
2960'

FZ105
N26 05.9 E119 45.3



NOT TO SCALE

SID	ROUTING
DS 61K	FZ105 - LJG (4930') - FZ011 (5910'+) - RUPOX.
DS 63K By ATC	FZ105 - FZ010 (2960'+) - FZ011 (5910'+) - RUPOX.
DS 65K By ATC	FZ105 - FZ010 (2960'+) - FZ011 (5910'+) - FZ012 - RUPOX.

CHANGES: Reissue.

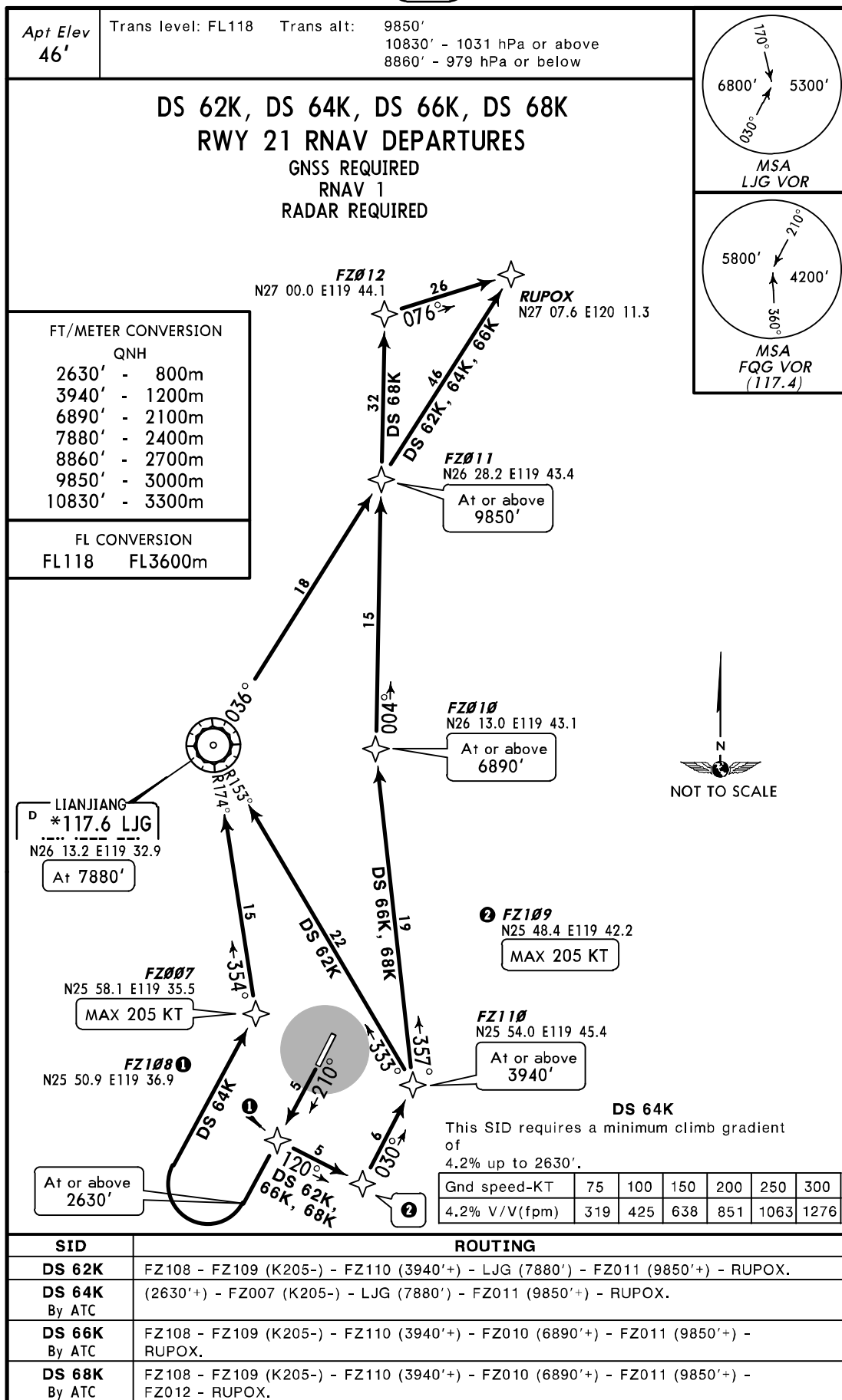
© JEPPESEN, 2013, 2014. ALL RIGHTS RESERVED.

ZSFZ/FOC
CHANGLE

JEPPESEN
4 APR 14 10-3C

FUZHOU, PR OF CHINA

RNAV SID



CHANGES: None.

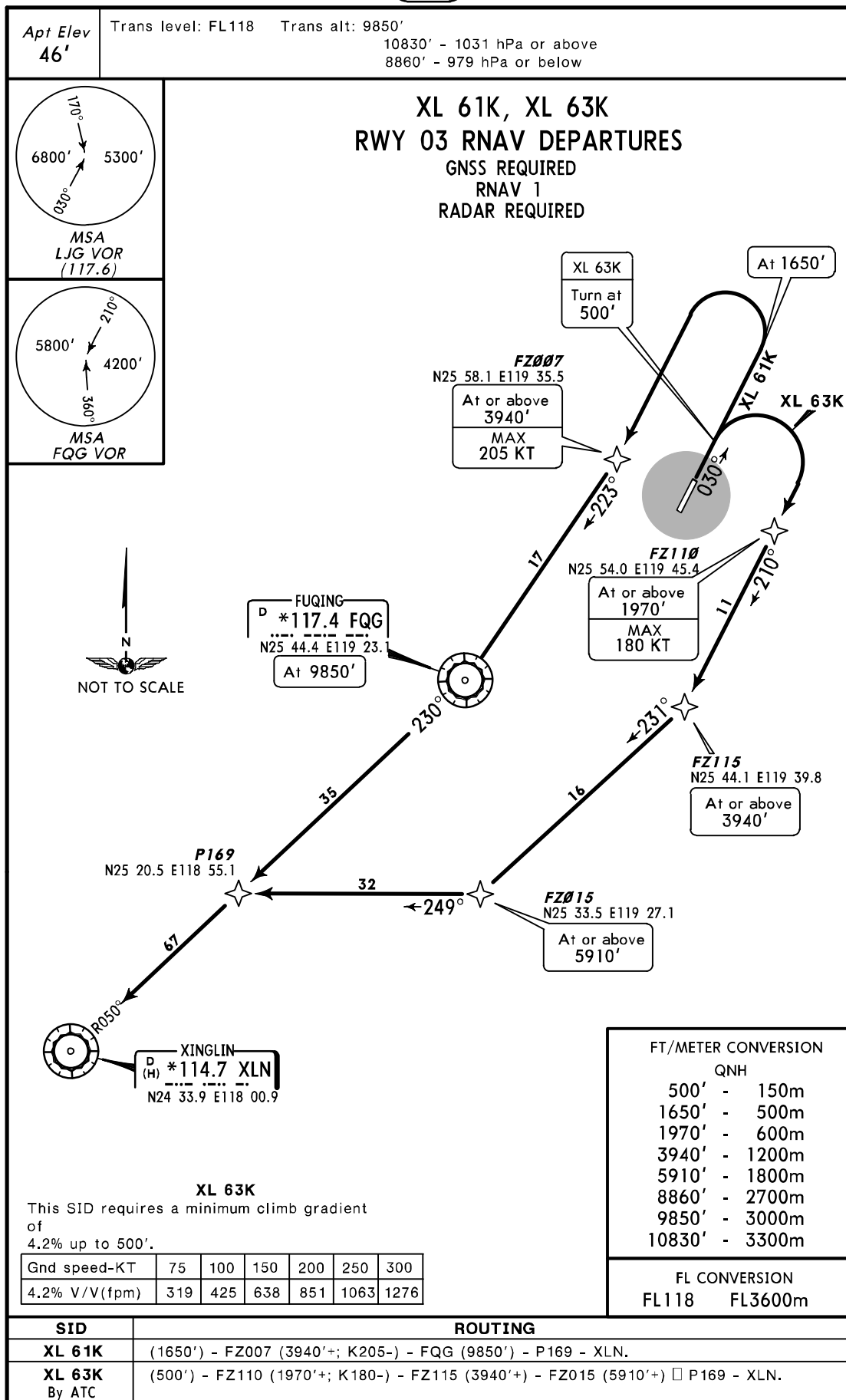
© JEPPESEN, 2013. ALL RIGHTS RESERVED.

ZSFZ/FOC
CHANGLE

JEPPESEN
6 SEP 13 10-3D Eff 19 Sep

FUZHOU, PR OF CHINA

RNAV SID



CHANGES: New procedures at this airport.

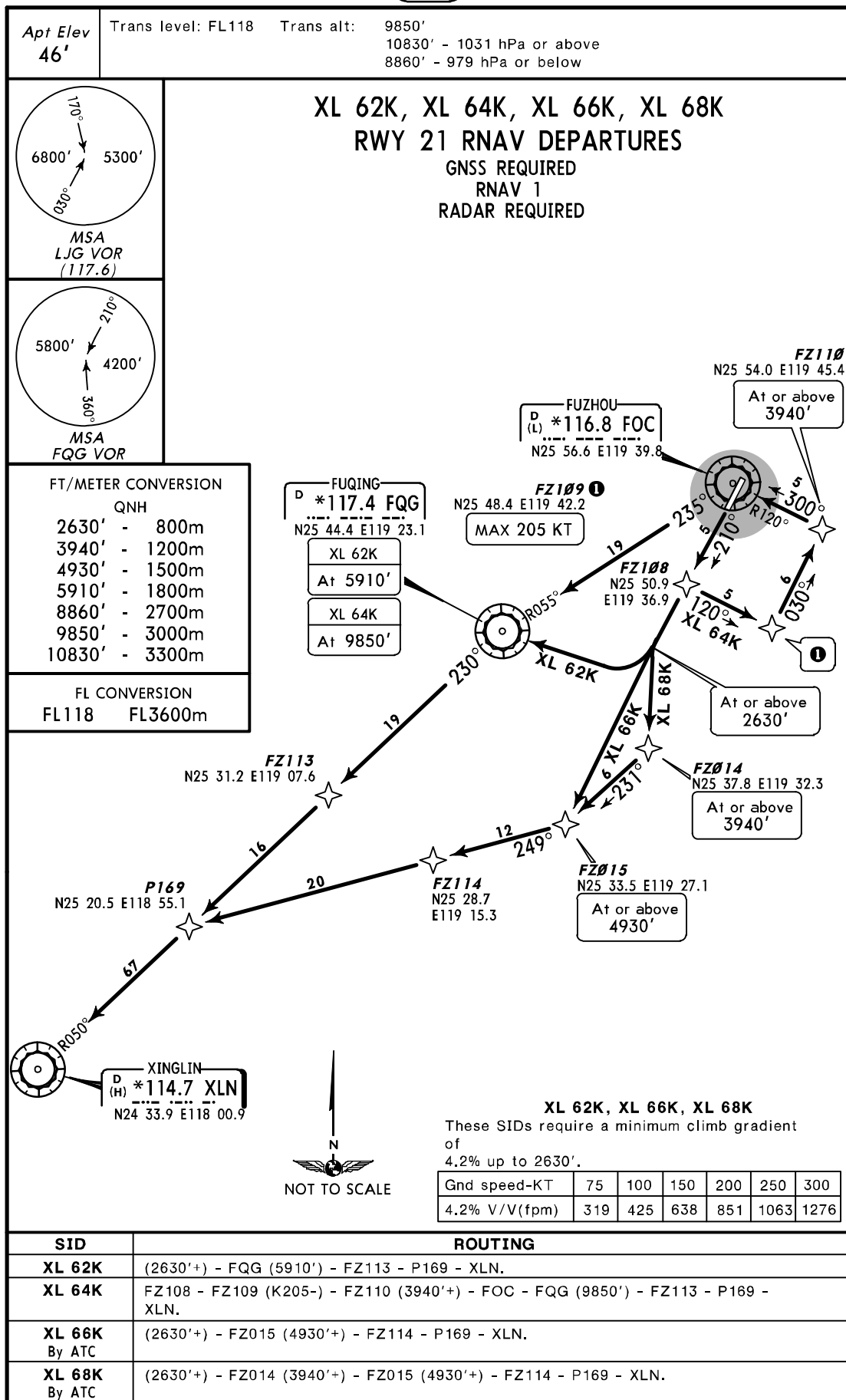
© JEPPESEN, 2013. ALL RIGHTS RESERVED.

ZSFZ/FOC
CHANGLE

JEPPESSEN
6 SEP 13 10-3E Eff 19 Sep

FUZHOU, PR OF CHINA

RNAV SID



CHANGES: New procedures at this airport.

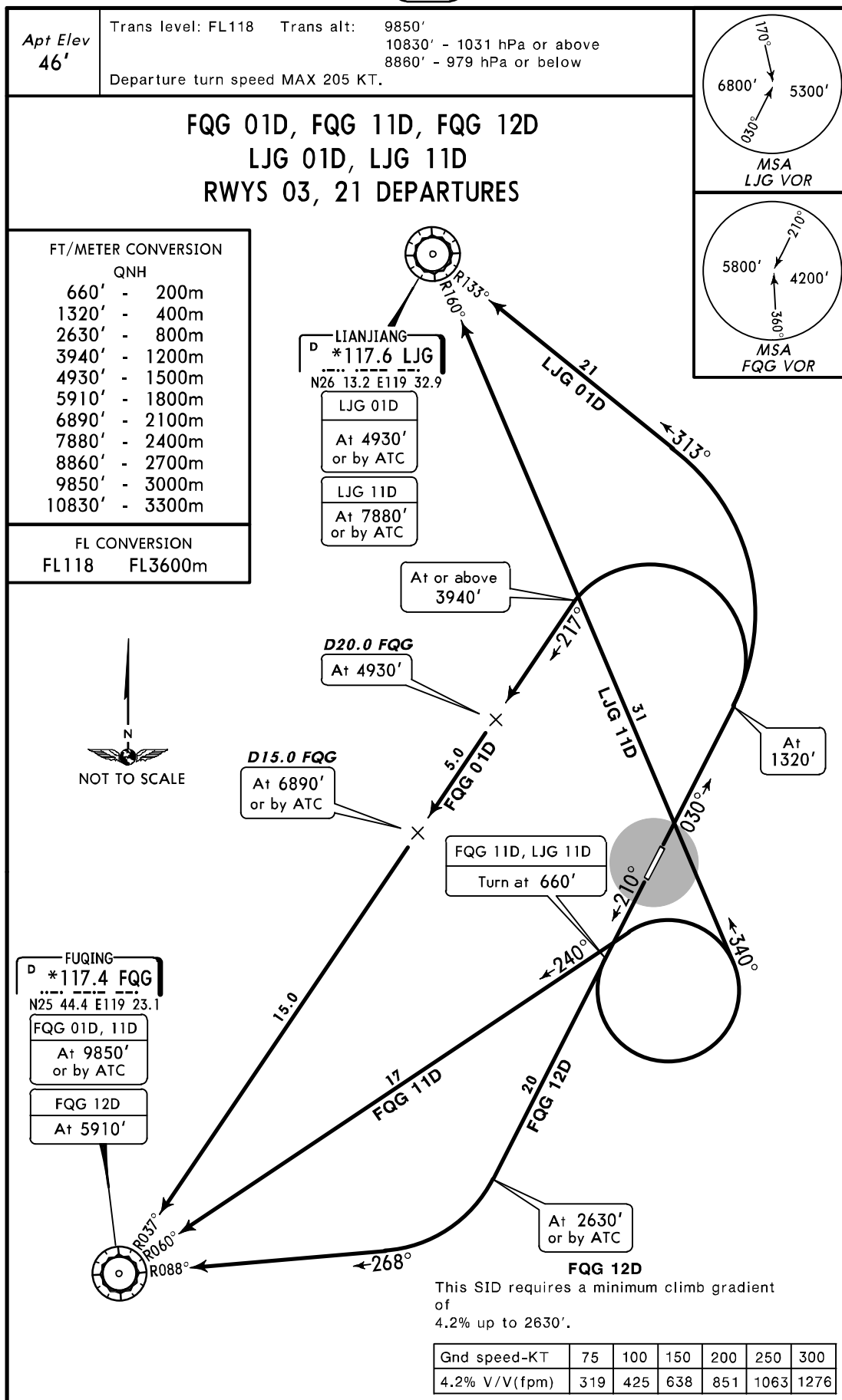
© JEPPESSEN, 2013. ALL RIGHTS RESERVED.

ZSFZ/FOC
CHANGLE

JEPPESEN
6 SEP 13 (10-3F) Eff 19 Sep

FUZHOU, PR OF CHINA

SID



CHANGES: New chart (SIDs transferred & revised).

© JEPPESEN, 2013. ALL RIGHTS RESERVED.

ZSFZ/FOC

Apt Elev 46'
N25 56.0 E119 39.9

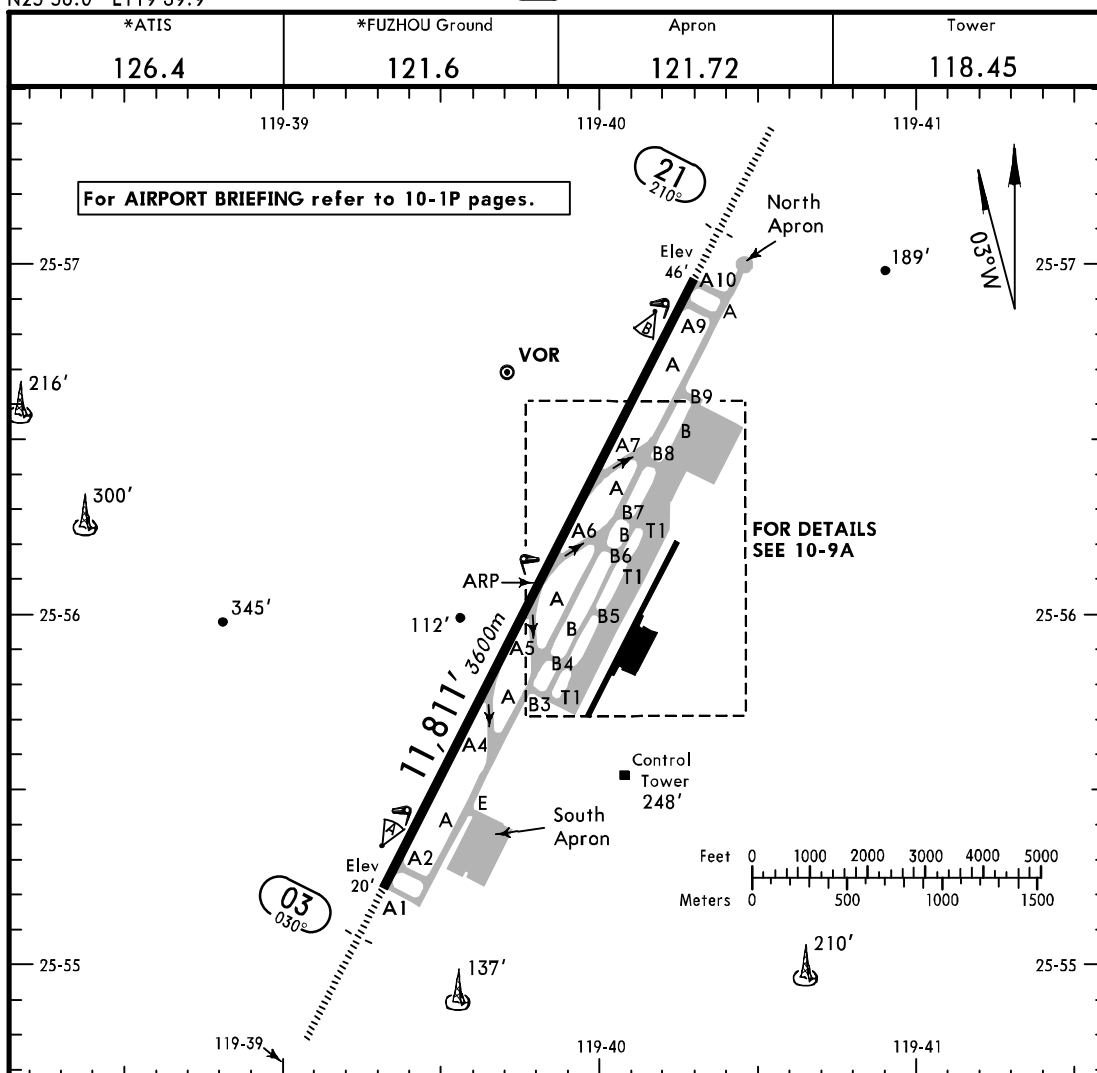
JEPPESSEN

29 AUG 14

(10-9)

FUZHOU, PR OF CHINA

CHANGLE



ADDITIONAL RUNWAY INFORMATION

ADDITIONAL RUNWAY INFORMATION					USABLE LENGTHS		TAKE-OFF	WIDTH
RWY					LANDING BEYOND			
					Threshold	Glide Slope		
03	HIRL ①	CL ②	ALSF-I	PAPI-L ③ ④	RVR		10,843' 3305m	148'
21	HIRL ①	CL ②	ALSF-I	PAPI-L ③ ⑤	RVR		10,699' 3261m	45m

① (60m)

② (30m)

③ (angle 3.0°)

④ HST-A6 & A7

⑤ HST-A4 & A5

Standard

TAKE-OFF

	RL	NIL (DAY only)
A		
B	RVR 400m	RVR 500m
C	VIS 800m	VIS 800m
D		

CHANGES: Enhanced accuracy.

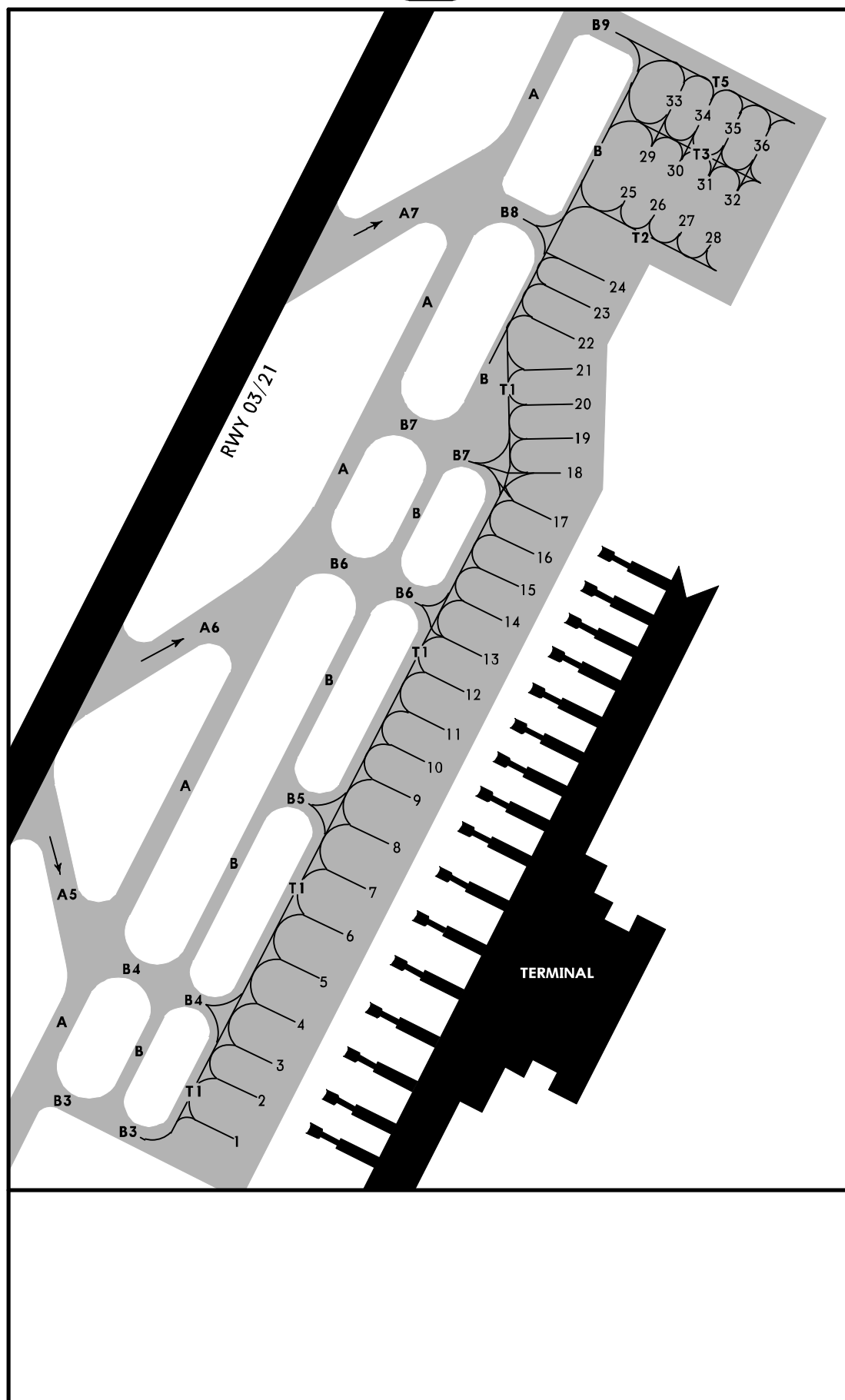
© JEPPESSEN, 1997, 2014. ALL RIGHTS RESERVED.

ZSFZ/FOC

JEPPESSEN
29 AUG 14 (10-9A)

FUZHOU, PR OF CHINA

CHANGLE

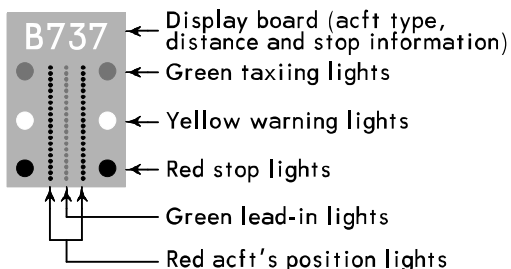


CHANGES: None.

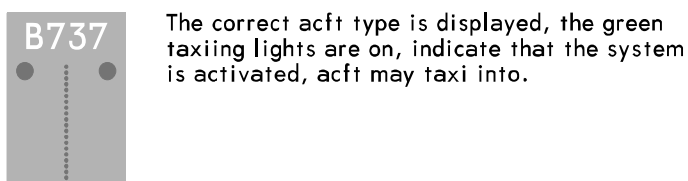
© JEPPESSEN, 2000, 2014. ALL RIGHTS RESERVED.

VISUAL DOCKING GUIDANCE SYSTEM

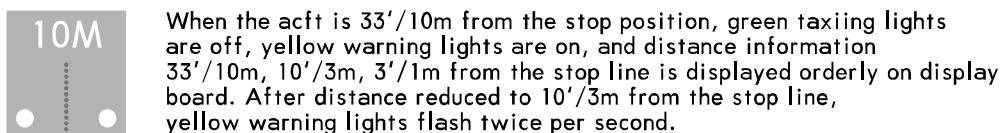
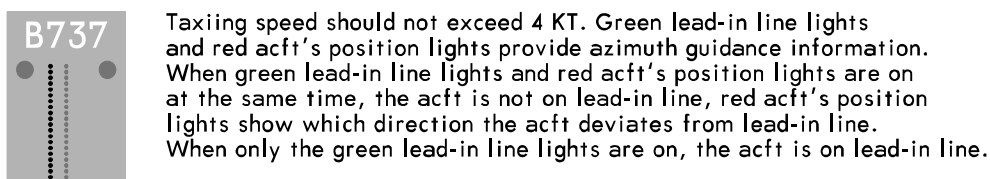
1. Introduction of display unit



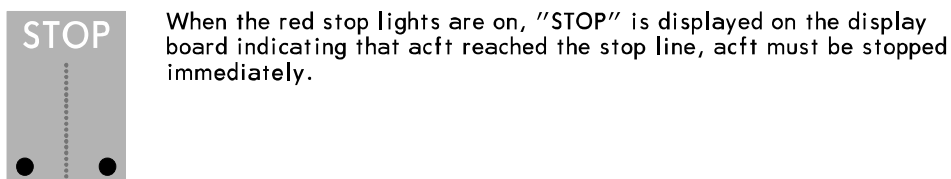
2. Gate ready for docking



3. Follow the lead-in line



4. Stop

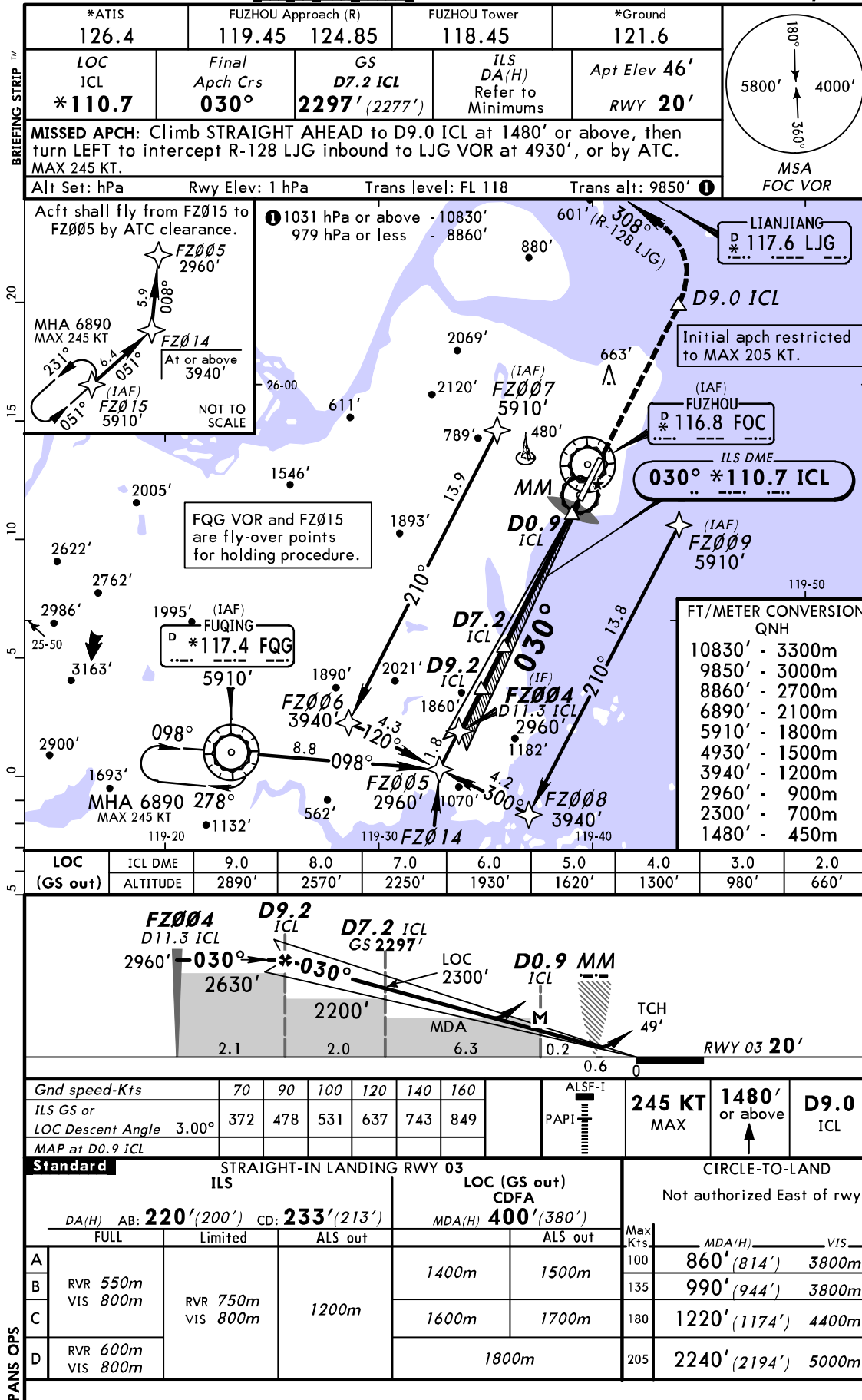


Note: When using the docking system, red stop lights are on, "STOP" is displayed on display board or all lights are off and nothing is displayed on display unit, acft must be stopped immediately and will be towed by a tow tractor or guided by a marshaller to the stop position.

ZSFZ/FOC
CHANGLE

8 AUG 14
Eff 20 Aug 1600Z (11-1)

FUZHOU, PR OF CHINA
RNAV ILS DME Z Rwy 03

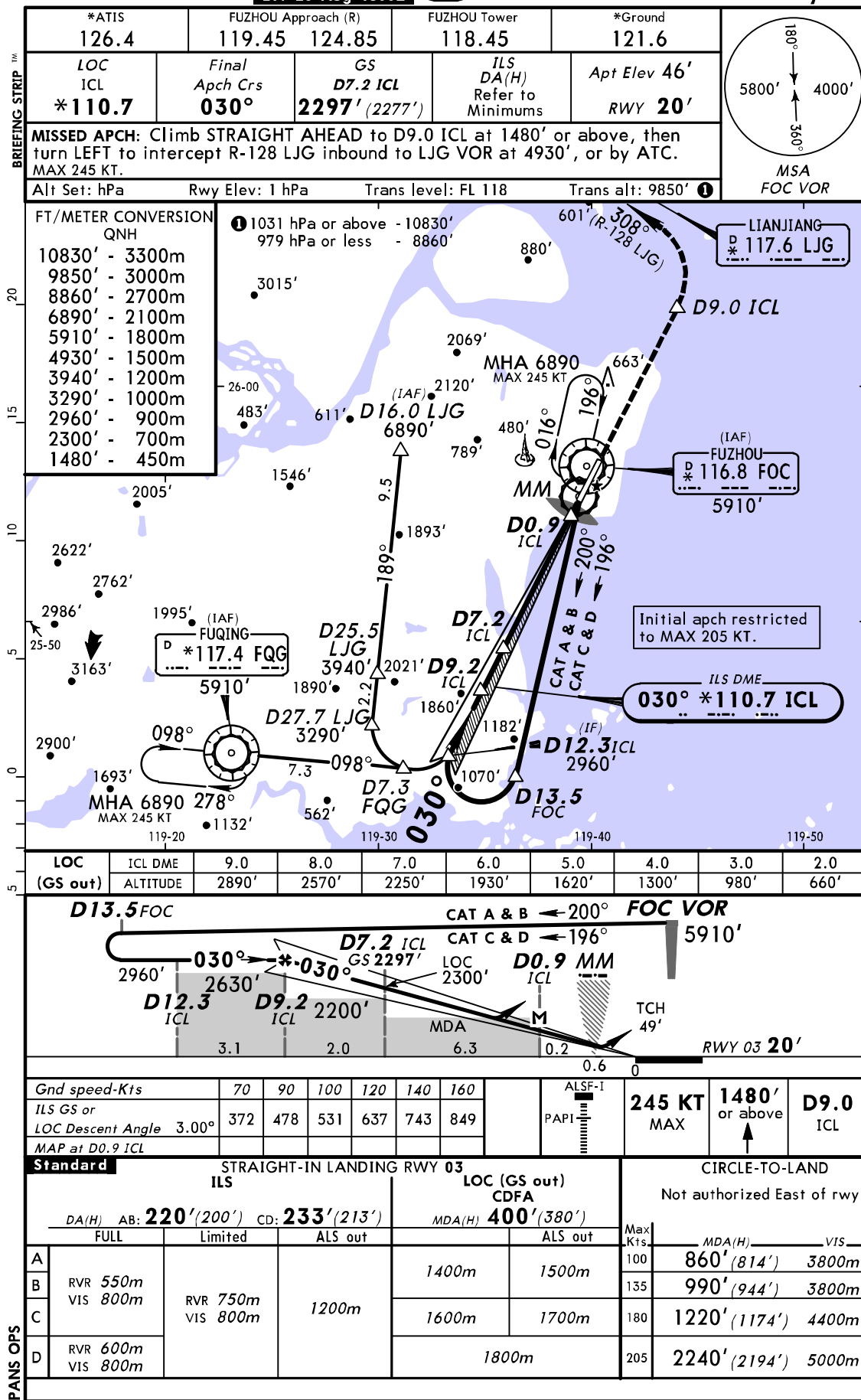


ZSFZ/FOC
CHANGE

8 AUG 14
Eff 20 Aug 1600Z

11-2

FUZHOU, PR OF CHINA
 ILS DME Y Rwy 03



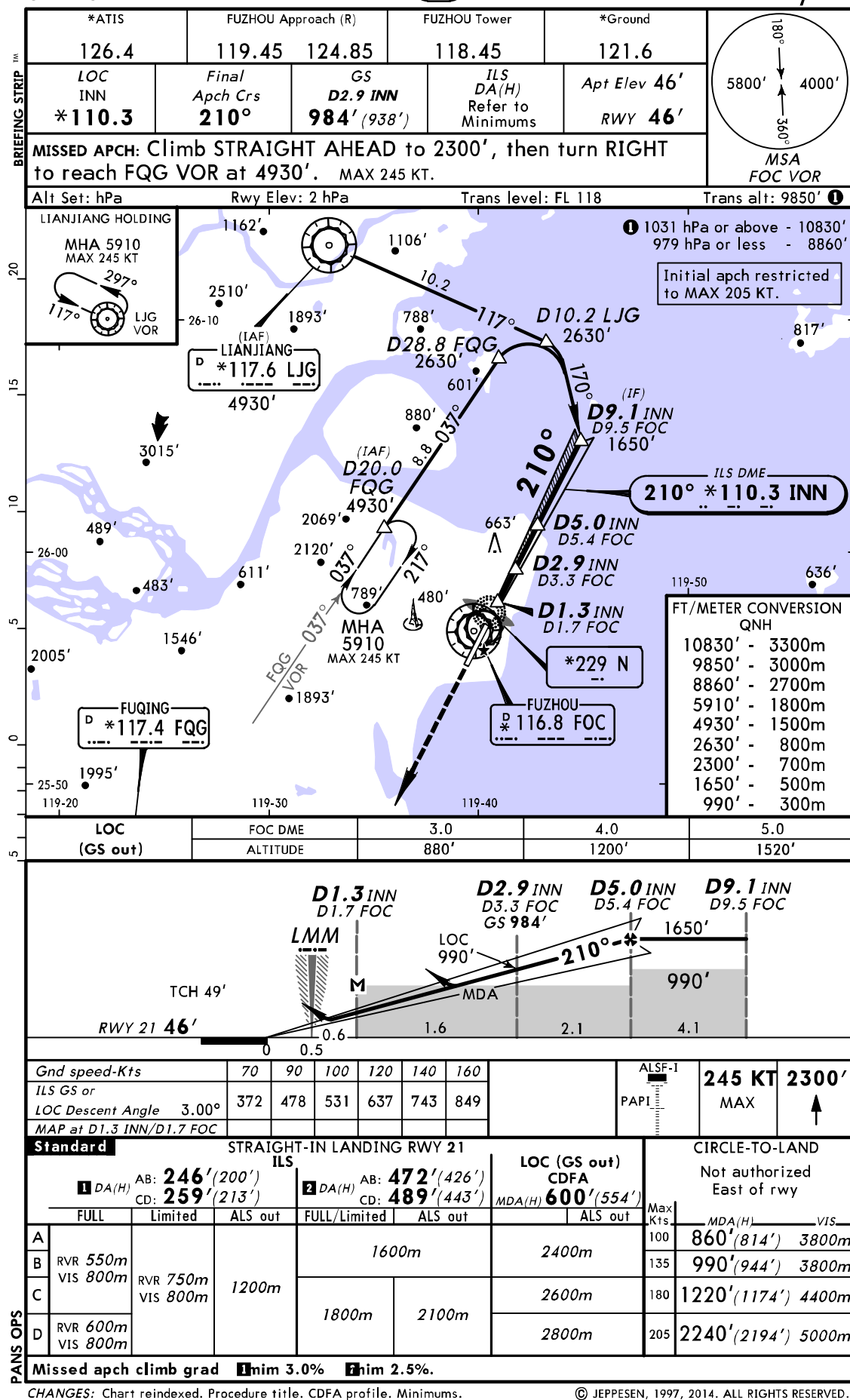
CHANGES: None.

© JEPPESEN, 1997, 2014. ALL RIGHTS RESERVED.

ZSFZ/FOC
CHANGLE

JEPPESEN
16 MAY 14 (11-4) Eff 29 May

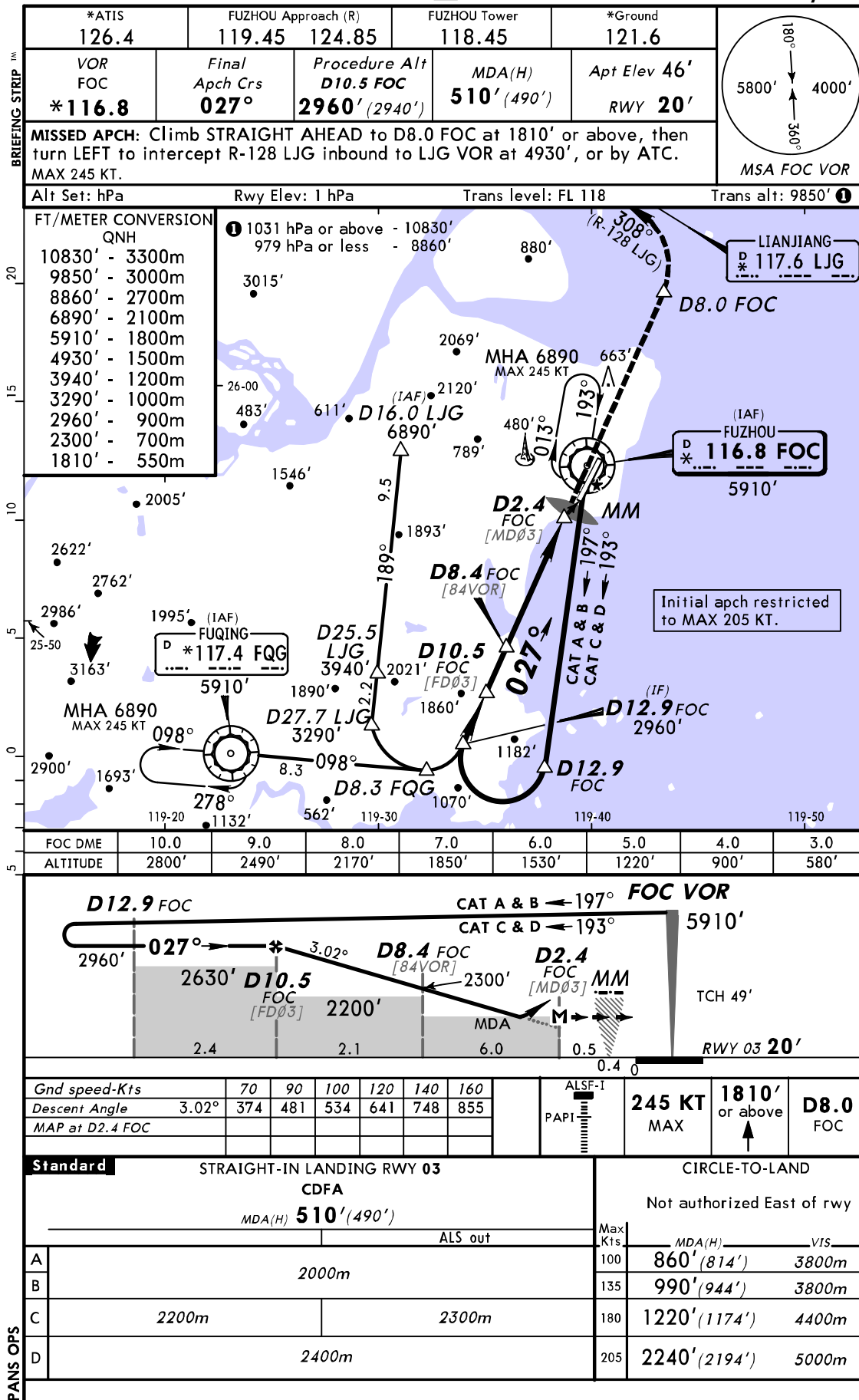
FUZHOU, PR OF CHINA
ILS DME Y Rwy 21



ZSFZ/FOC
CHANGLE

JEPPESEN
16 MAY 14 (13-1) Eff 29 May

FUZHOU, PR OF CHINA
VOR DME Rwy 03



ZSFZ/FOC
CHANGLE

JEPPESEN
16 MAY 14 (16-1) Eff 29 May

FUZHOU, PR OF CHINA
NDB Rwy 21

