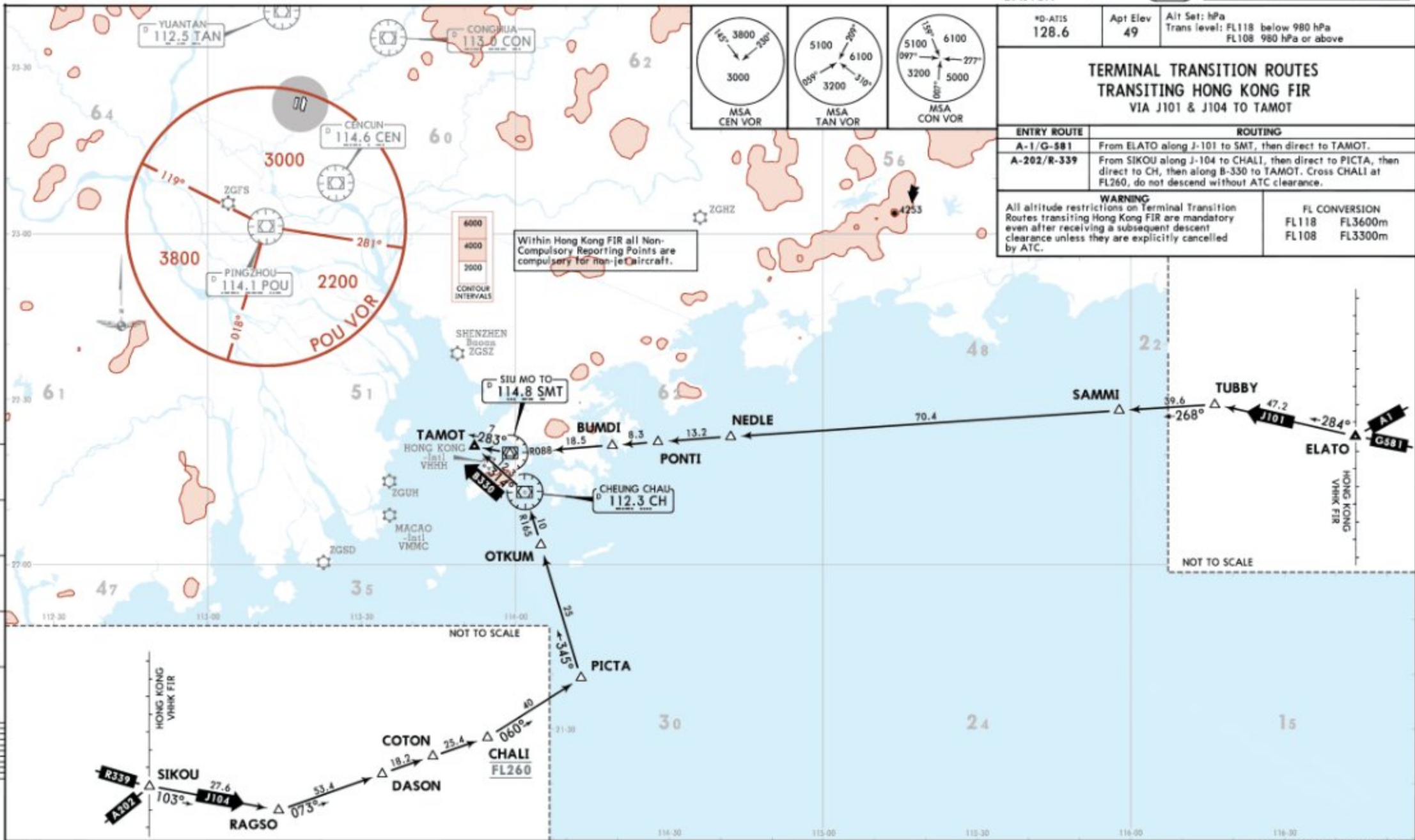
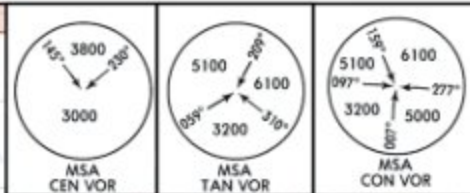


#D-ATIS 128.6	Apt Elev 49	Alt Set: hPa Trans level: FL118 below 980 hPa FL108 980 hPa or above
TERMINAL TRANSITION ROUTES TRANSITING HONG KONG FIR VIA J101 & J104 TO TAMOT		
ENTRY ROUTE	ROUTING	
A-1/G-581	From ELATO along J-101 to SMT, then direct to TAMOT.	
A-202/R-339	From SIKOU along J-104 to CHALI, then direct to PICTA, then direct to CH, then along B-330 to TAMOT. Cross CHALI at FL260, do not descend without ATC clearance.	
WARNING All altitude restrictions on Terminal Transition Routes transiting Hong Kong FIR are mandatory even after receiving a subsequent descent clearance unless they are explicitly cancelled by ATC.		FL CONVERSION FL118 FL3600m FL108 FL3300m



CHANGES: New format.

© JEPPESEN, 2017. ALL RIGHTS RESERVED.

NAVIGRAPH CHARTS INTENDED FOR FLIGHT SIMULATION ONLY - NOT FOR NAVIGATIONAL USE