

List of pages in this Trip Kit

Trip Kit Index

Airport Information For ZKPY

Terminal Charts For ZKPY

Revision Letter For Cycle 26-2020

Change Notices

Notebook

General Information

Location: PYONGYANG PRK
ICAO/IATA: ZKPY / FNJ
Lat/Long: N39°12.3', E125°40.2'
Elevation: 89 ft

Airport Use: Public
Daylight Savings: Not Observed
UTC Conversion: -9:00 = UTC
Magnetic Variation: 8.0°W

Fuel Types: Jet A-1
Repair Types: Minor Engine
Customs: Yes
Airport Type: IFR
Landing Fee: Yes
Control Tower: Yes
Jet Start Unit: No
LLWS Alert: No
Beacon: No

Sunrise: 2257 Z
Sunset: 0826 Z

Runway Information

Runway: 17
Length x Width: 11237 ft x 197 ft
Surface Type: concrete
TDZ-Elev: 89 ft
Lighting: Edge, ALS, Centerline, TDZ

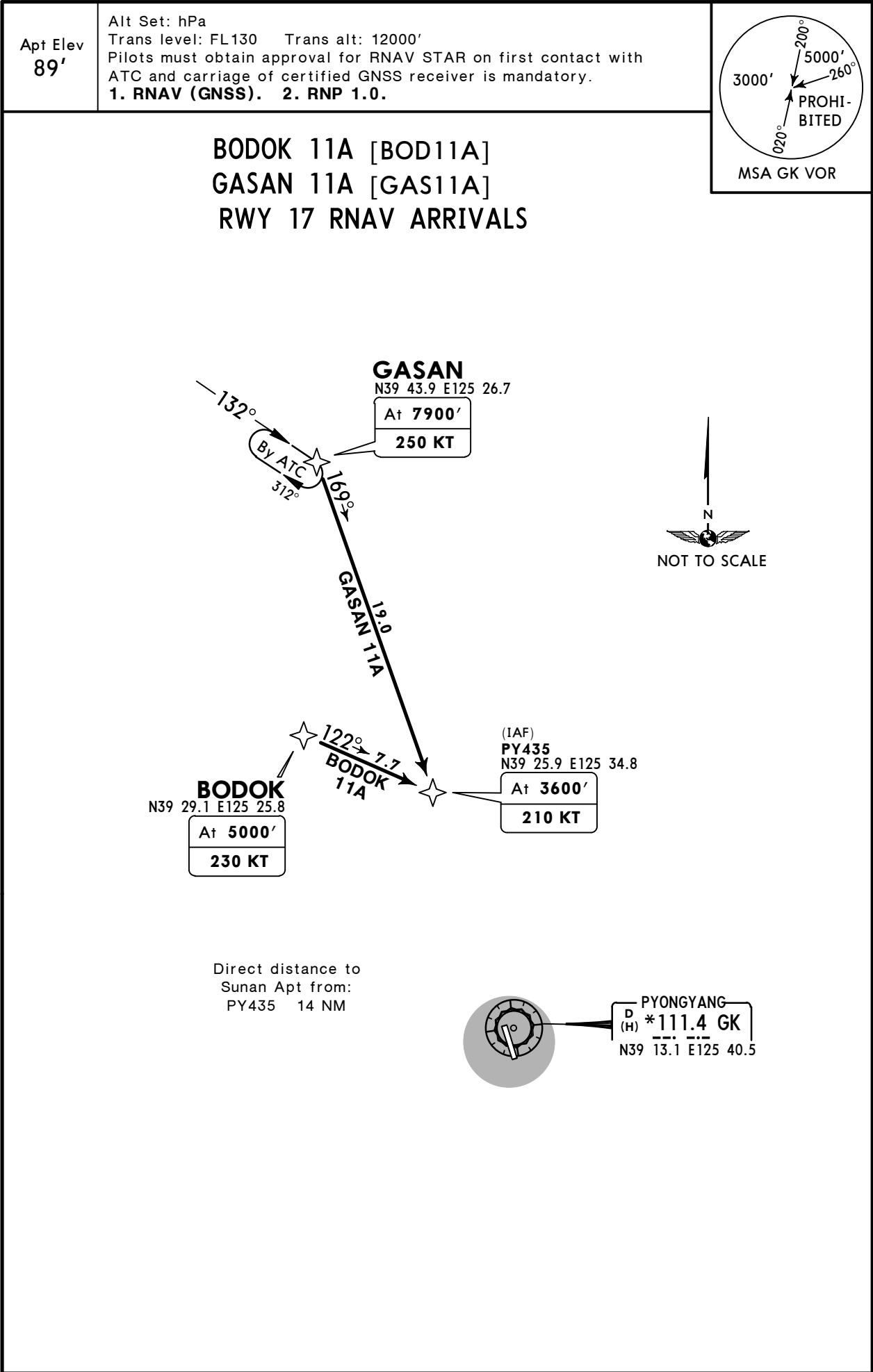
Runway: 35
Length x Width: 11237 ft x 197 ft
Surface Type: concrete
TDZ-Elev: 79 ft
Lighting: Edge, ALS, Centerline, TDZ

Communication Information

Pyongyang Tower: 118.300
Pyongyang Approach: 133.900

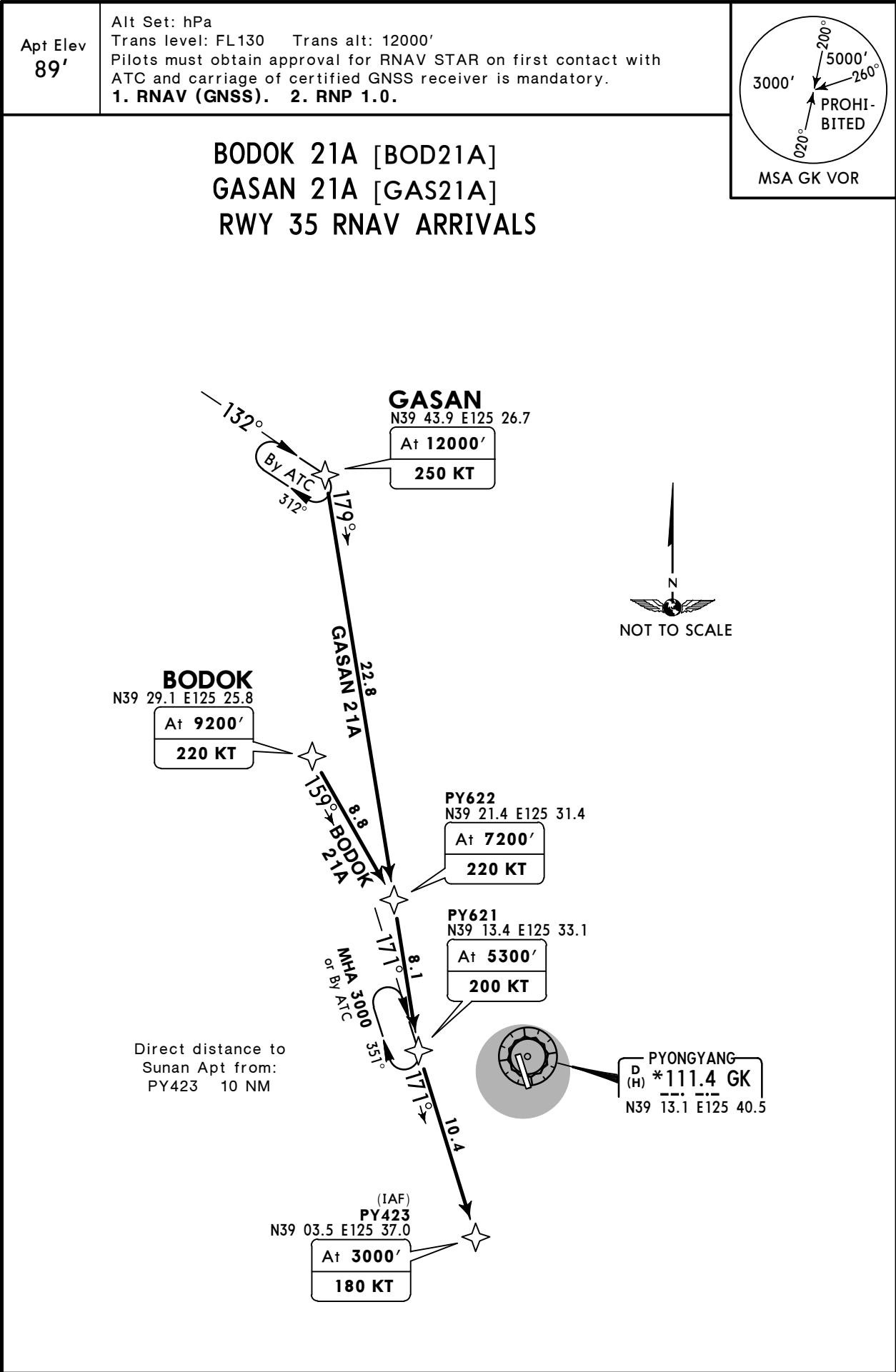
ZKPY/FNJ
SUNAN

JEPPESENPYONGYANG, DPR OF KOREA
14 AUG 15 10-2 Eff 20 Aug RNAV STAR



ZKPY/FNJ
SUNAN

JEPPESENPYONGYANG, DPR OF KOREA
14 AUG 15 (10-2A) Eff 20 Aug RNAV STAR



STAR	ROUTING
BODOK 21A	BODOK (9200'; K220) - PY622 (7200'; K220) - PY621 (5300'; K200) - PY423 (3000'; K180).
GASAN 21A	GASAN (12000'; K250) - PY622 (7200'; K220) - PY621 (5300'; K200) - PY423 (3000'; K180).

© JEPPESEN, 2015. ALL RIGHTS RESERVED.

ZKPY/FNJ
SUNAN

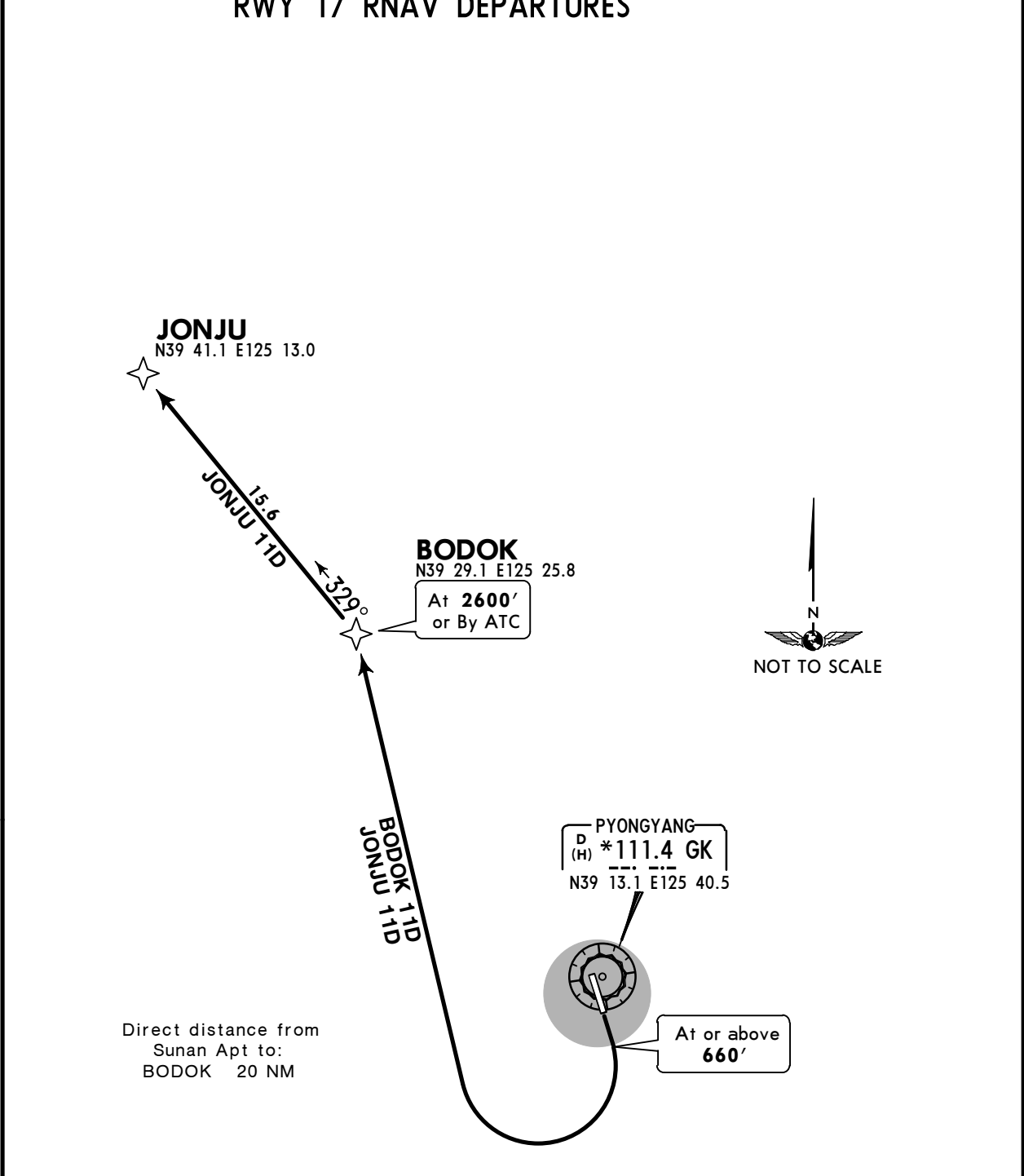
JEPESEN PYONGYANG, DPR OF KOREA
14 AUG 15 10-3 Eff 20 Aug RNAV SID

Apt Elev
89'

Trans level: FL130 Trans alt: 12000'
Pilots must obtain approval for RNAV SID on first contact with ATC and carriage of certified GNSS receiver is mandatory.
1. RNAV (GNSS). 2. RNP 1.0.

BODOK 11D [BOD11D]
JONJU 11D [JON11D]
RWY 17 RNAV DEPARTURES

MSA GK VOR



These SIDs require a minimum climb gradient of 3.7% up to 960'.

Gnd speed-KT	75	100	150	200	250	300
3.7% V/V (fpm)	281	375	562	749	937	1124

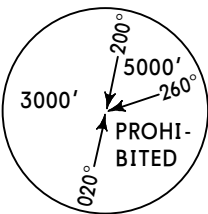
SID	ROUTING
BODOK 11D	Climb straight ahead, at or above 660' turn RIGHT direct to BODOK, or as instructed by ATC.
JONJU 11D	Climb straight ahead, at or above 660' turn RIGHT direct to BODOK, then to JONJU, or as instructed by ATC.

ZKPY/FNJ
SUNAN

 **JEPPESEN** PYONGYANG, DPR OF KOREA
14 AUG 15 **(10-3A)** **Eff 20 Aug** **RNAV SID**

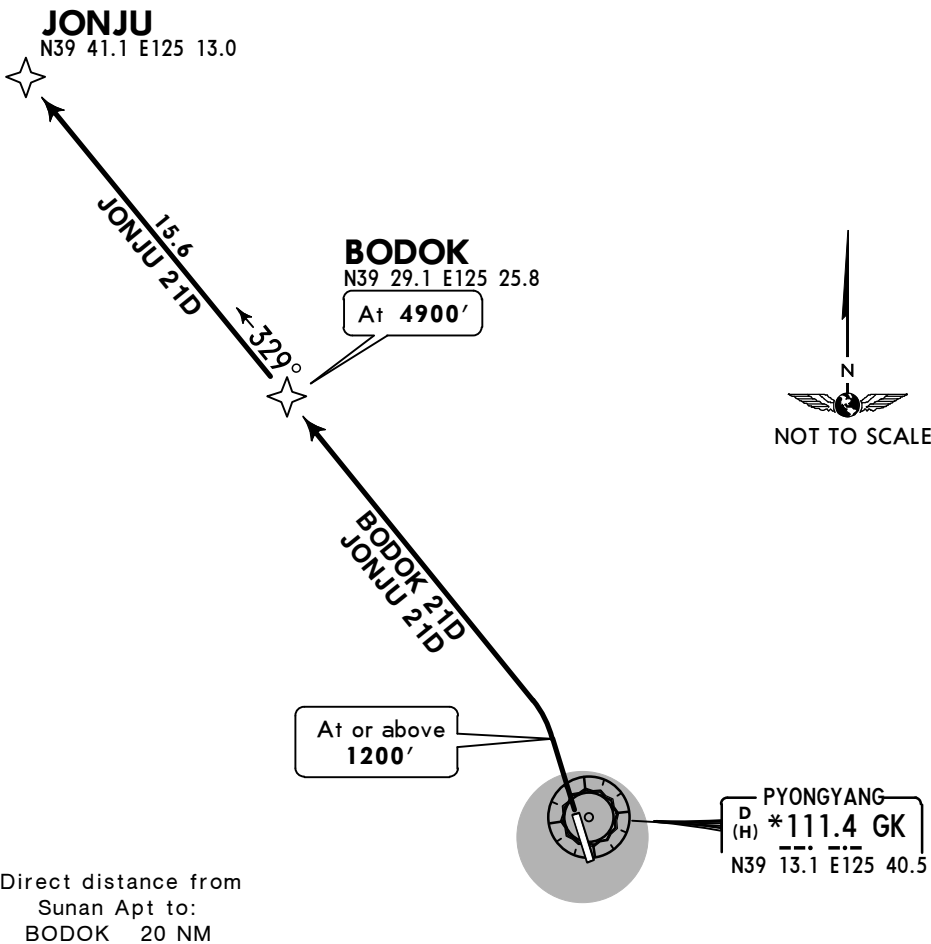
Apt Elev
89'

Trans level: FL130 Trans alt: 12000'
Pilots must obtain approval for RNAV SID on first contact with ATC and carriage of certified GNSS receiver is mandatory.
1. RNAV (GNSS). 2. RNP 1.0.



MSA GK VOR

BODOK 21D [BOD21D]
JONJU 21D [JON21D]
RWY 35 RNAV DEPARTURES



These SIDs require a minimum climb gradient of 5.5% up to 1330'.

Gnd speed-KT	75	100	150	200	250	300
5.5% V/V (fpm)	418	557	835	1114	1392	1671

SID	ROUTING
BODOK 21D	Climb straight ahead, at or above 1200' turn LEFT direct to BODOK, or as instructed by ATC.
JONJU 21D	Climb straight ahead, at or above 1200' turn LEFT direct to BODOK, then to JONJU, or as instructed by ATC.

ZKPY/FNJ
SUNAN

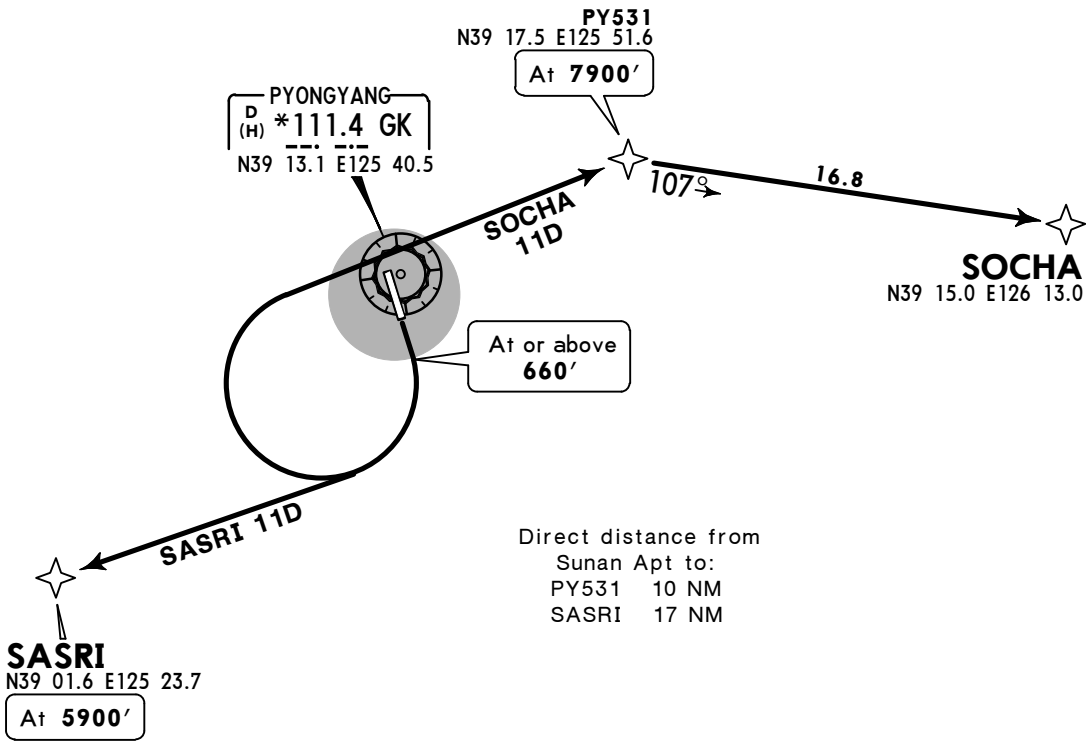
JEPPESEN PYONGYANG, DPR OF KOREA
14 AUG 15 10-3B Eff 20 Aug RNAV SID

Apt Elev
89'

Trans level: FL130 Trans alt: 12000'
Pilots must obtain approval for RNAV SID on first contact with ATC and carriage of certified GNSS receiver is mandatory.
1. RNAV (GNSS). 2. RNP 1.0.

MSA GK VOR

SASRI 11D [SAS11D]
SOCHA 11D [SOC11D]
RWY 17 RNAV DEPARTURES



Direct distance from
Sunan Apt to:
PY531 10 NM
SASRI 17 NM

These SIDs require a minimum climb gradient
of
3.7% up to 960'.

Gnd speed-KT	75	100	150	200	250	300
3.7% V/V (fpm)	281	375	562	749	937	1124



SID	ROUTING
SASRI 11D	Climb straight ahead, at or above 660' turn RIGHT direct to SASRI, or as instructed by ATC.
SOCHA 11D	Climb straight ahead, at or above 660' turn RIGHT direct to PY531, then to SOCHA, or as instructed by ATC.

ZKPY/FNJ
SUNAN

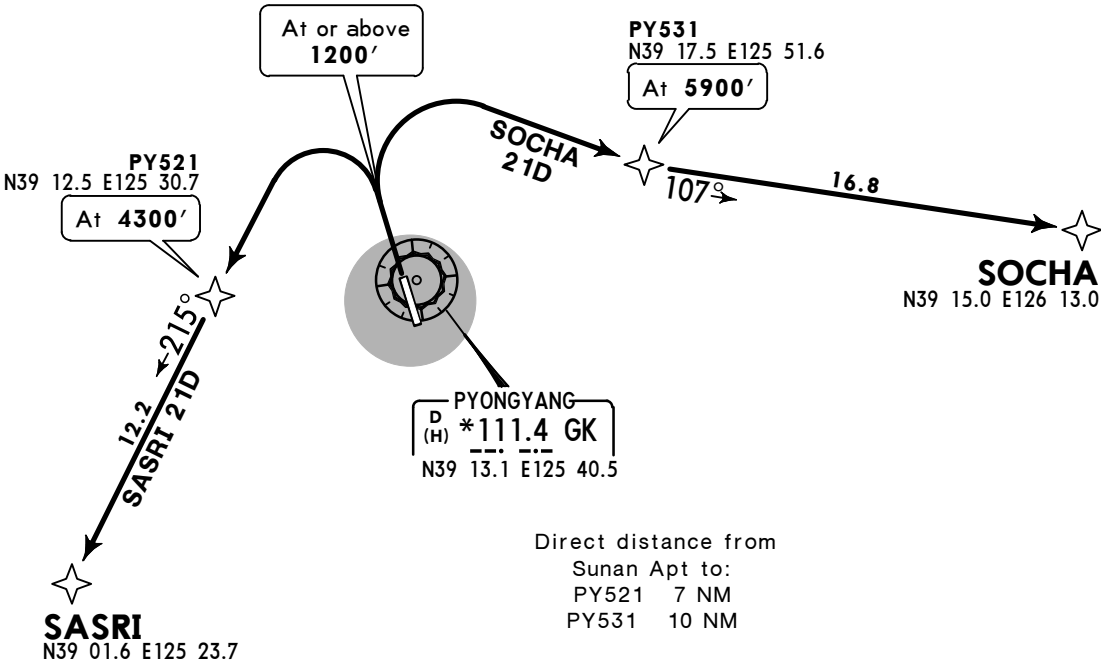
JEPPESEN PYONGYANG, DPR OF KOREA
14 AUG 15 10-3C Eff 20 Aug RNAV SID

Apt Elev
89'

Trans level: FL130 Trans alt: 12000'
Pilots must obtain approval for RNAV SID on first contact with
ATC and carriage of certified GNSS receiver is mandatory.
1. RNAV (GNSS). 2. RNP 1.0.

MSA GK VOR

SASRI 21D [SAS21D]
SOCHA 21D [SOC21D]
RWY 35 RNAV DEPARTURES



These SIDs require a minimum climb gradient
of
5.5% up to 1330'.

Gnd speed-KT	75	100	150	200	250	300
5.5% V/V (fpm)	418	557	835	1114	1392	1671



SID	ROUTING
SASRI 21D	Climb straight ahead, at or above 1200' turn LEFT direct to PY521, then to SASRI, or as instructed by ATC.
SOCHA 21D	Climb straight ahead, at or above 1200' turn RIGHT direct to PY531, then to SOCHA, or as instructed by ATC.

ZKPY/FNJ

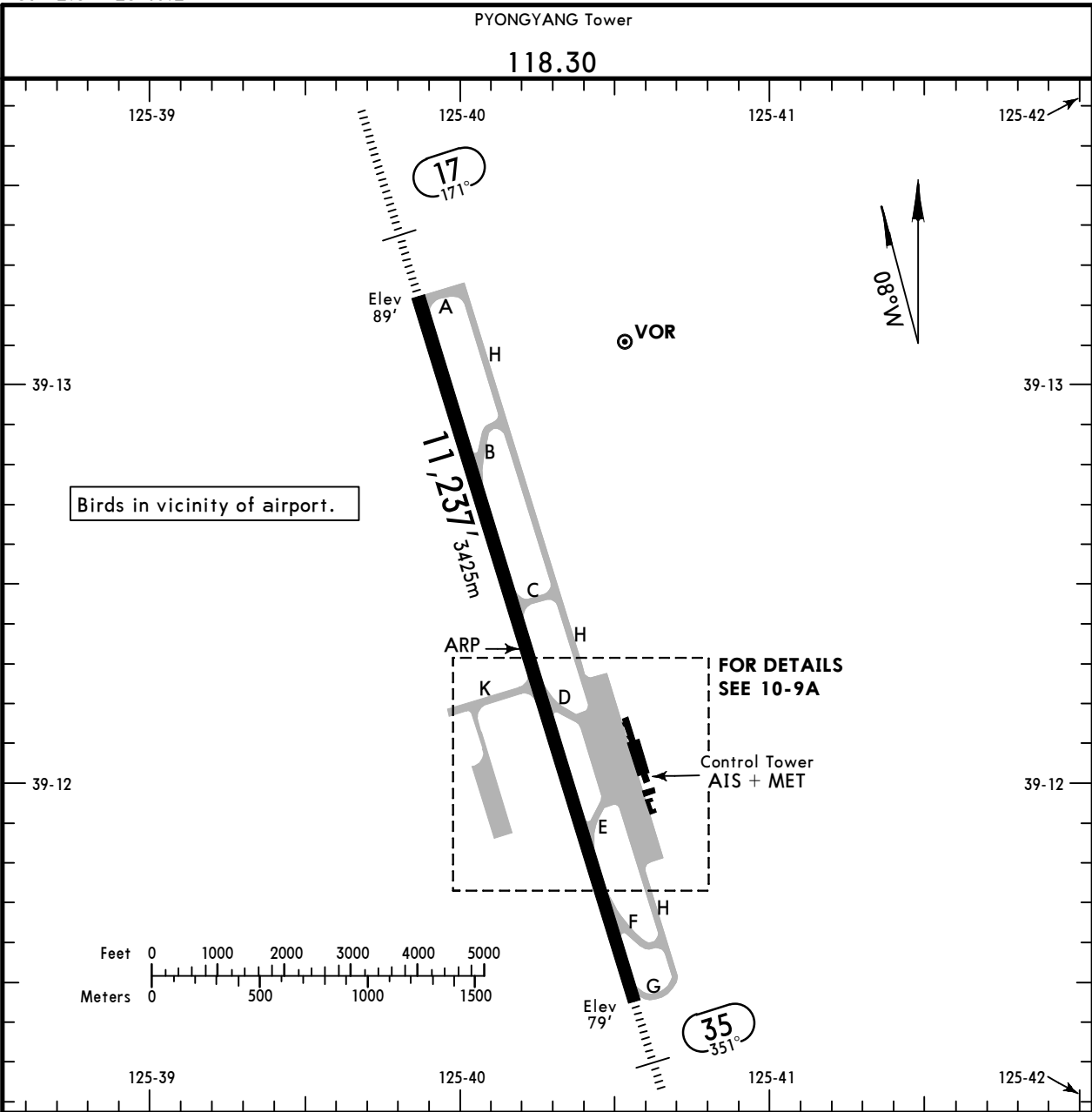
Apt Elev 89'
N39 12.3 E125 40.2



PYONGYANG, DPR OF KOREA

16 SEP 16 (10-9)

SUNAN



ADDITIONAL RUNWAY INFORMATION							
RWY					USABLE LENGTHS		
					LANDING BEYOND		WIDTH
					Threshold	Glide Slope	
17	MIRL (60m) ① HIALS TDZ PAPI-L (3.0°) HST-D&F					10,122' 3085m	197'
35	MIRL (60m) ① HIALS TDZ PAPI-L (3.0°) HST-B					9961' 3036m	60m

① CL (30m spacing) White

NOISE ABATEMENT PROCEDURES

Rwy 17 is used for preferential Rwy for noise abatement for take-off and Rwy 35 for landing.
RUN-UP TESTS: Ground running of acft engines for test or maintenance is subject to ATC approval.

TAKE-OFF			
AIR CARRIER (JAA)			
All Rwys			
LVP must be in force			
	RL & CL	RCLM (DAY only) or RL	RCLM (DAY only) or RL
A			
B	200m	250m	400m
C			
D	250m	300m	

CHANGES: Twy K added. New apron established.

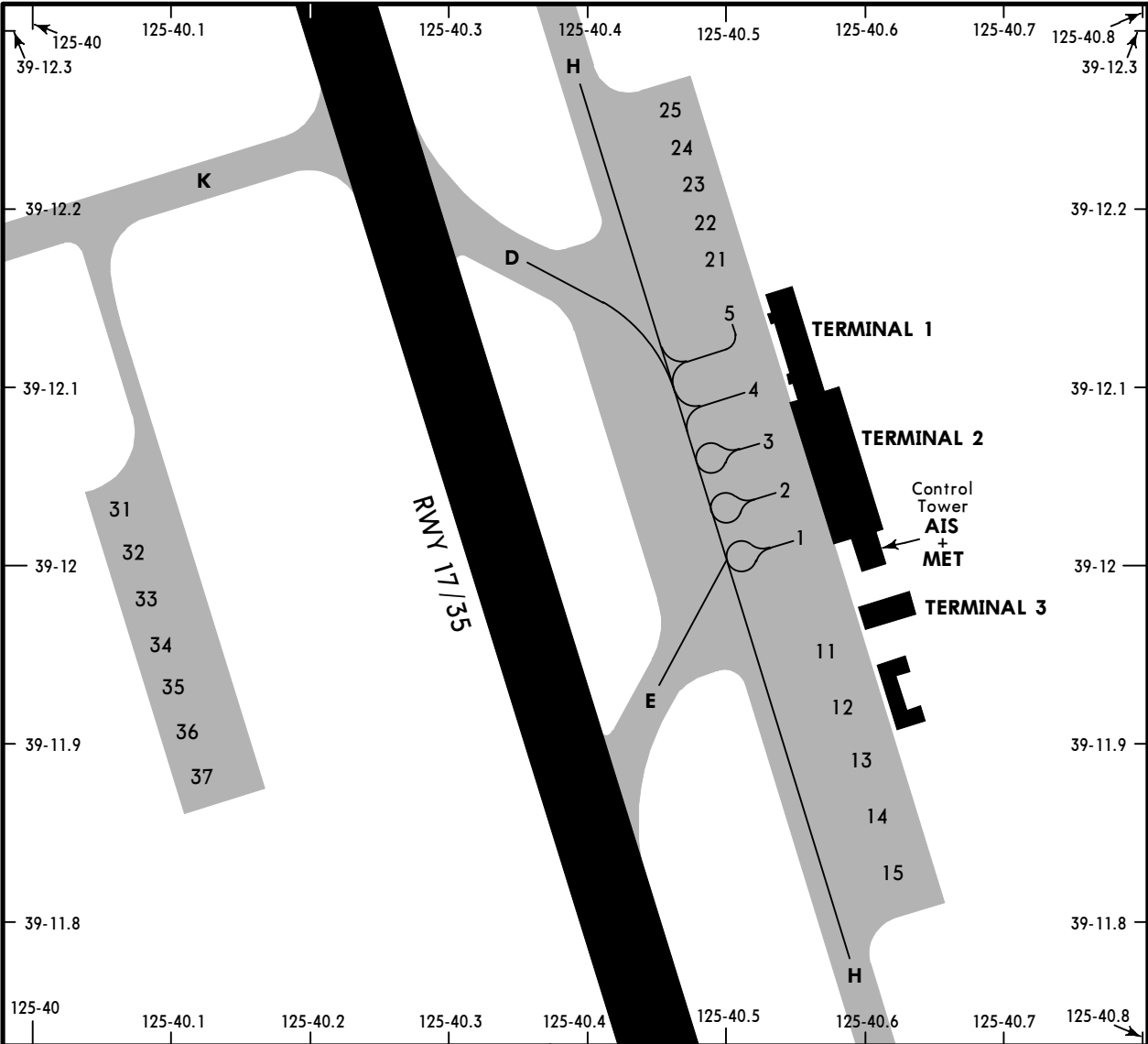
© JEPPESEN, 2000, 2016. ALL RIGHTS RESERVED.

ZKPY/FNJ

JEPPESEN PYONGYANG, DPR OF KOREA

16 SEP 16 **10-9A**

SUNAN



INS COORDINATES	
STAND No.	COORDINATES
1	N39 12.0 E125 40.6
2	N39 12.0 E125 40.5
3 thru 5	N39 12.1 E125 40.5
11 thru 13	N39 11.9 E125 40.6
14, 15	N39 11.8 E125 40.6
21 thru 25	N39 12.2 E125 40.5
31 thru 33	N39 12.0 E125 40.1
34 thru 37	N39 11.9 E125 40.1

ZKPY/FNJ

STRAIGHT-IN RWY		A	B	C	D
17	ILS	289'(200')	289'(200')	289'(200')	289'(200')
	FULL	R550m ❶	R550m ❶	R550m ❶	R550m ❶
	ALS out	R1200m	R1200m	R1200m	R1200m
	LOC ❷	690'(601')	690'(601')	690'(601')	690'(601')
		R1500m	R1500m	R2100m	R2100m
	ALS out	R1500m	R1500m	R2400m	R2400m
	RNP (LNAV/VNAV)	640'(551')	640'(551')	640'(551')	640'(551')
		R1500m	R1500m	R1800m	R1800m
	ALS out	R1500m	R1500m	R2400m	R2400m
	RNP (LNAV) ❷	690'(601')	690'(601')	690'(601')	690'(601')
35		R1500m	R1500m	R2100m	R2100m
	ALS out	R1500m	R1500m	R2400m	R2400m
	ILS	299'(220')	309'(230')	319'(240')	329'(250')
	FULL	R800m	R800m	R800m	R800m
	ALS out	R1200m	R1200m	R1200m	R1300m
	LOC ❷	610'(531')	610'(531')	610'(531')	610'(531')
		R1500m	R1500m	R2000m	R2000m
	ALS out	R1500m	R1500m	R2400m	R2400m
	RNP (LNAV/VNAV)	580'(501')	580'(501')	580'(501')	580'(501')
		R1500m	R1500m	R1900m	R1900m
	ALS out	R1500m	R1500m	R2400m	R2400m
	RNP (LNAV) ❷	640'(561')	640'(561')	640'(561')	640'(561')
		R1500m	R1500m	R2200m	R2200m
	ALS out	R1500m	R1500m	R2400m	R2400m

- ❶ RVR 750m when a Flight Director or Autopilot or HUD to DA is not used.
- ❷ Continuous Descent Final Approach.

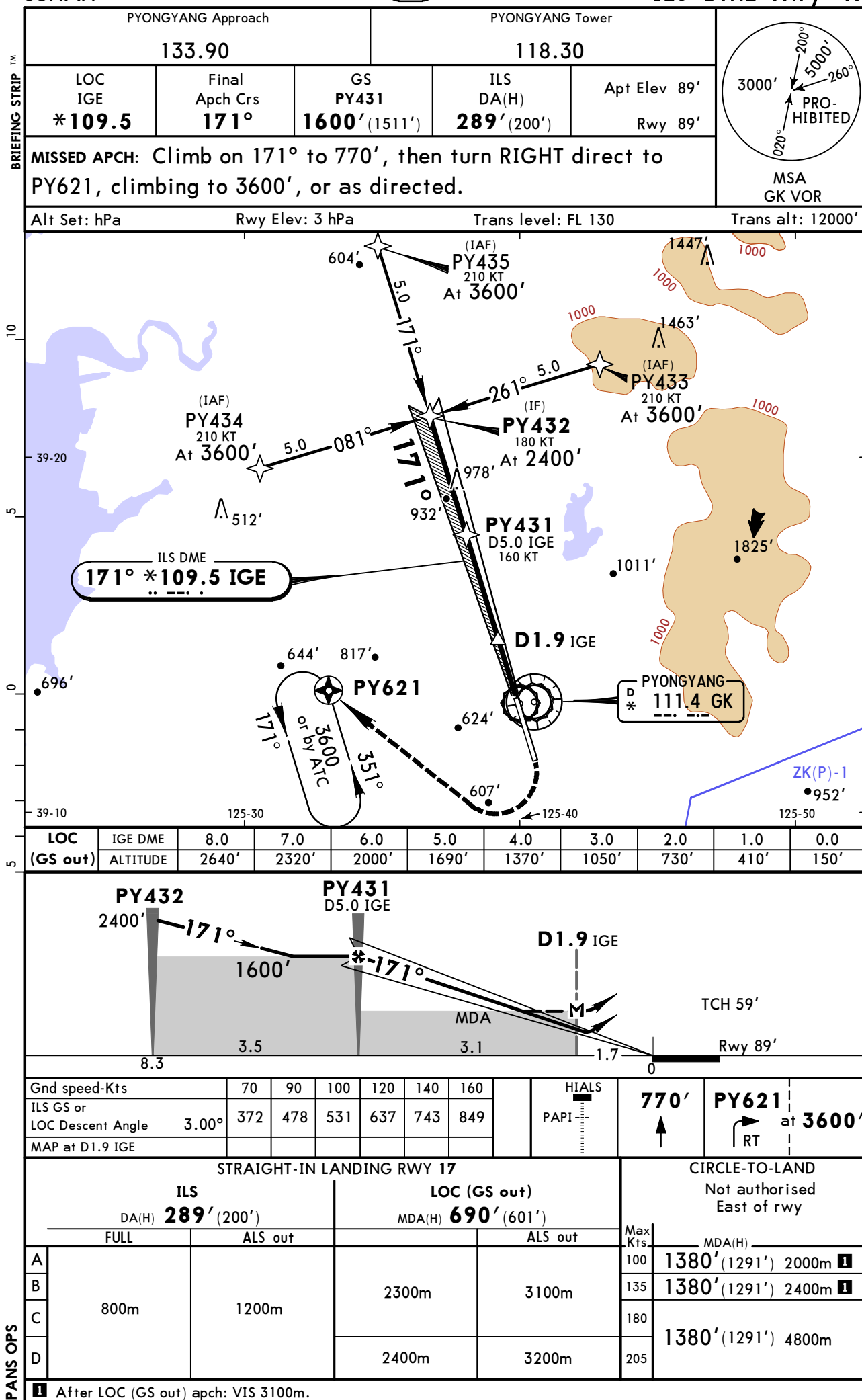
CIRCLE-TO-LAND ❸	100 KT	135 KT	180 KT	205 KT
After ILS & LOC	1380' (1291')	1380' (1291')	1380' (1291')	1380' (1291')
After RNP	970' (881') V1500m	970' (881') V1600m	970' (881') V2400m	970' (881') V3600m

- ❸ Not authorised East of rwy.

TAKE-OFF					
	Low Visibility Take-off				
	RL, CL & relevant RVR	RL & CL	Day: RL & RCLM Night: RL or CL	Day: RL or RCLM Night: RL or CL	Adequate vis ref (Day only)
A	TDZ, MID, RO R150m	R200m	R300m	400m	500m
B					
C					
D					

ZKPY/FNJ
SUNAN

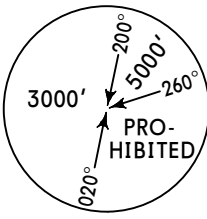
JEPPesen PYONGYANG, DPR OF KOREA
14 AUG 15 **11-1** **Eff 20 Aug** **ILS DME Rwy 17**



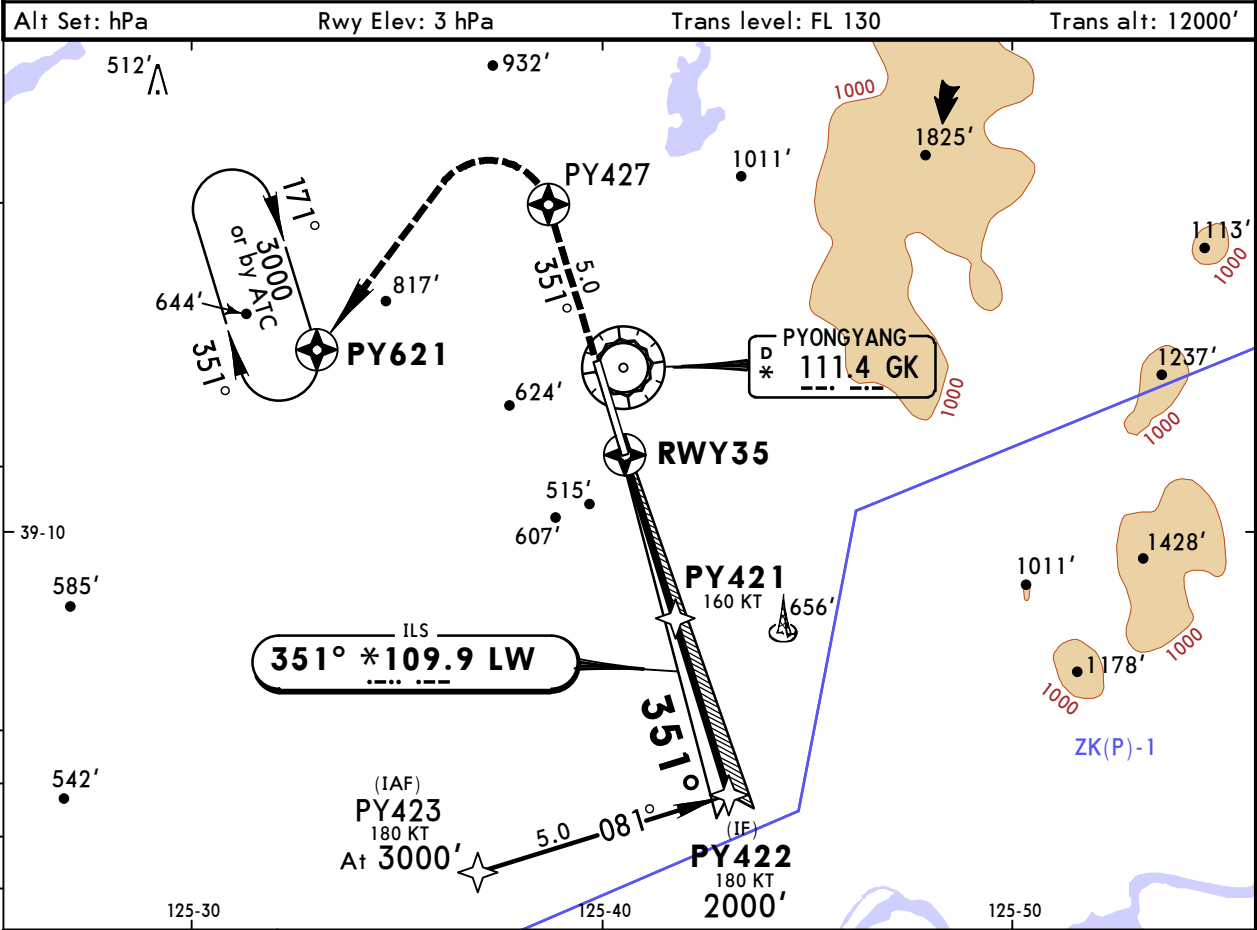
ZKPY/FNJ
SUNAN

JEPPESSEN PYONGYANG, DPR OF KOREA
14 AUG 15 11-2 Eff 20 Aug ILS Rwy 35

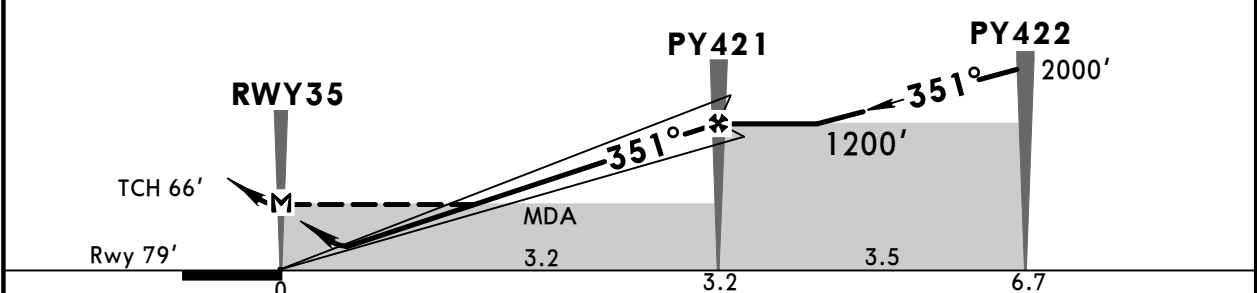
PYONGYANG Approach			PYONGYANG Tower		
133.90			118.30		
LOC LW *109.9	Final Apch Crs 351°	GS PY421 1200' (1121')	ILS DA(H) Refer to Minimums	Apt Elev 89' Rwy 79'	
MISSED APCH: Climb to PY427, then turn LEFT direct to PY621 at 3000', or as directed.					



MSA
GK VOR



LOC (GS out)	DIST to RWY35	0.0	1.0	2.0	3.0	4.0	5.0	6.0	7.0
	ALTITUDE	150'	470'	790'	1110'	1430'	1740'	2060'	2380'

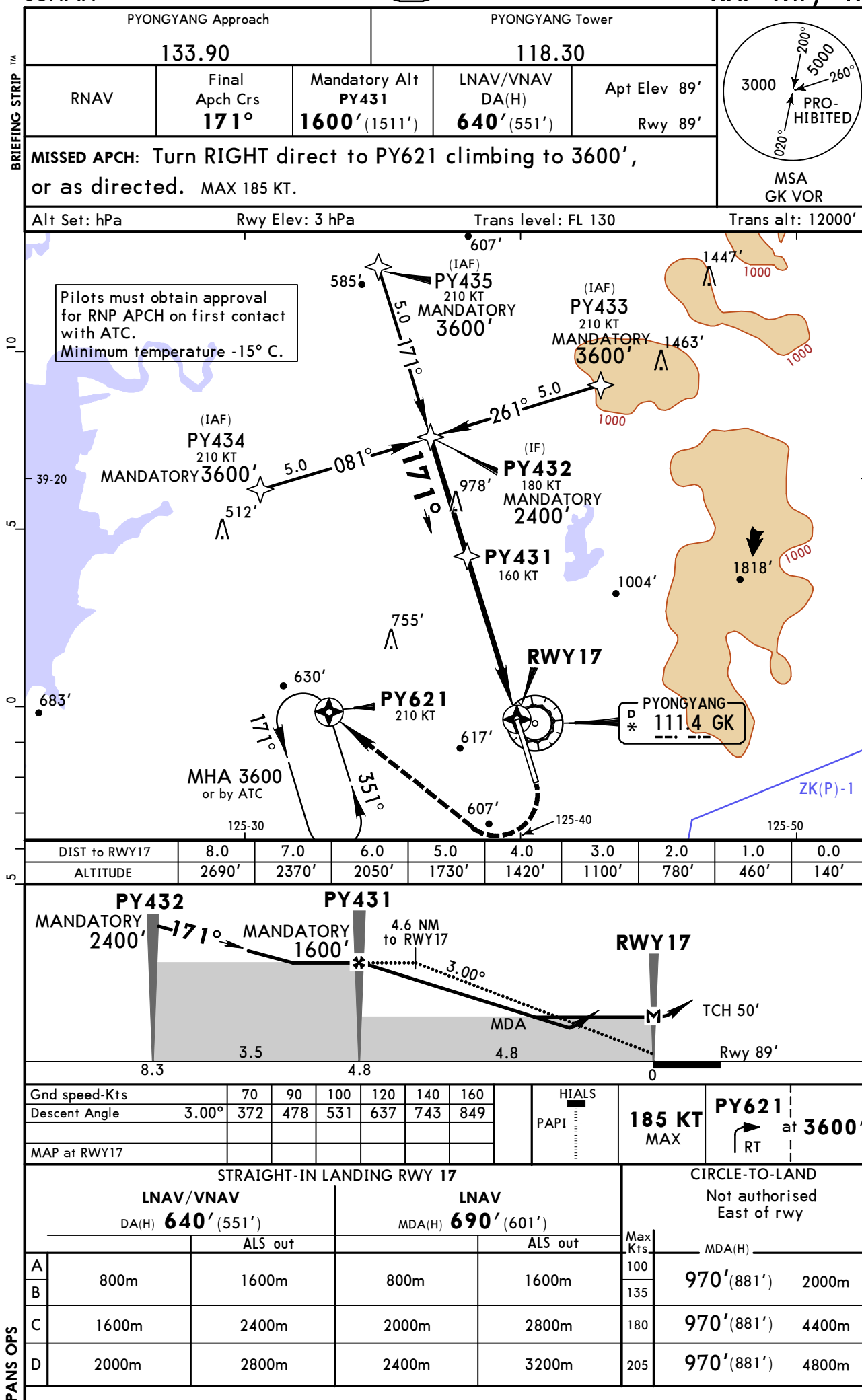


Gnd speed-Kts	70	90	100	120	140	160	HIALS	
ILS GS or	372	478	531	637	743	849	PAPI	
LOC Descent Angle	3.00°						PY427 PY621 at 3000'	
MAP at RWY35							↑ LT	

ILS STRAIGHT-IN LANDING RWY 35				CIRCLE-TO-LAND	
DA(H) A: 299' (220') C: 319' (240')		LOC (GS out)		Not authorised	
B: 309' (230') D: 329' (250')		MDA(H) 610' (531')		East of rwy	
FULL		ALS out		Max Kts	MDA(H)
1200m		1200m 1600m		100	1380' (1291') 2000m
				135	1380' (1291') 2400m
				180	1380' (1291') 4800m
				205	

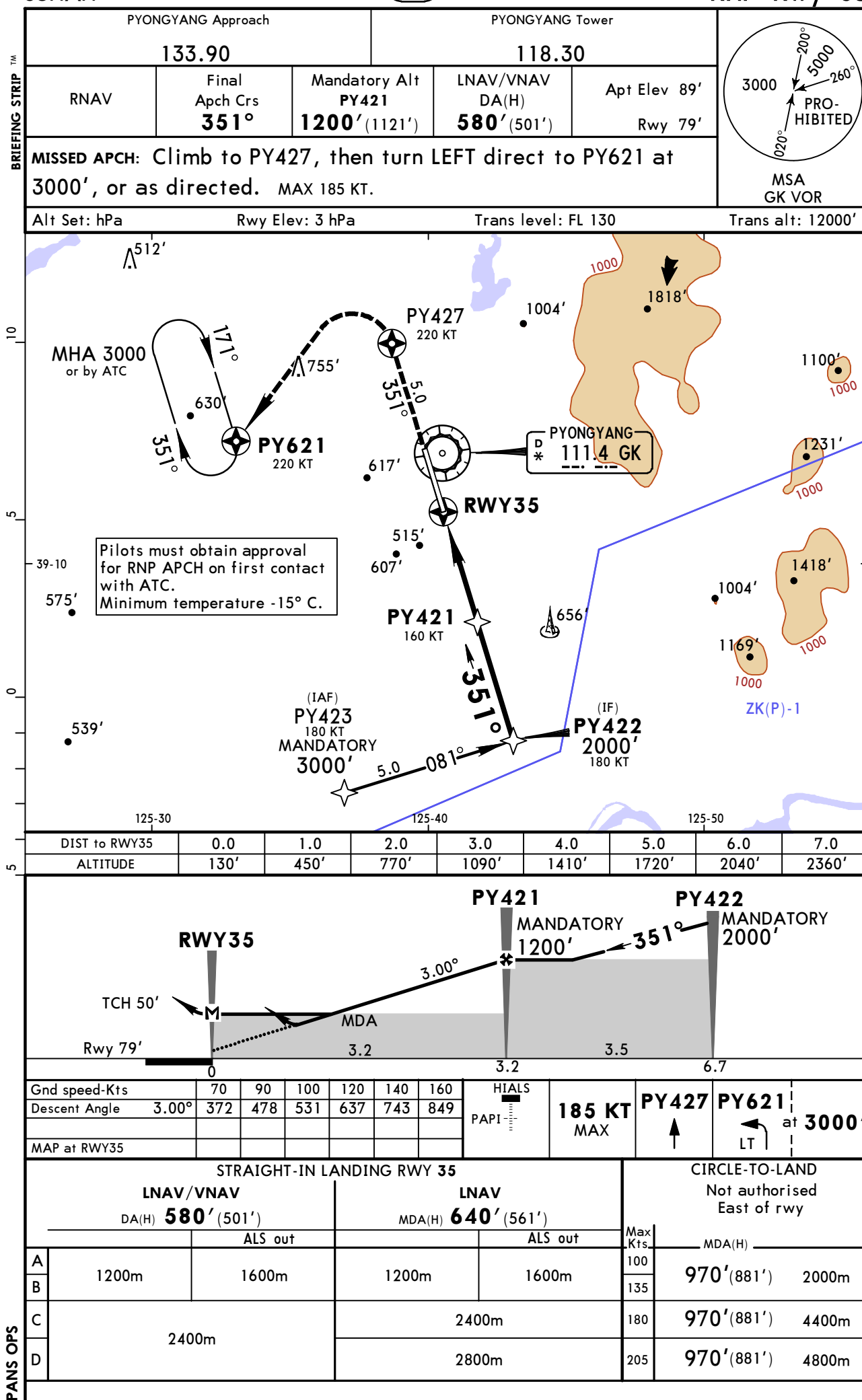
ZKPY/FNJ
SUNAN

JEPPESSEN PYONGYANG, DPR OF KOREA
23 AUG 19 (12-1)
RNP Rwy 17



ZKPY/FNJ
SUNAN

JEPPESSEN PYONGYANG, DPR OF KOREA
23 AUG 19 **(12-2)**
RNP Rwy 35



CHANGES: Procedure designation.

© JEPPESSEN, 2015, 2019. ALL RIGHTS RESERVED.

Chart changes since cycle 25-2020

ADD = added chart, REV = revised chart, DEL = deleted chart.

ACT	PROCEDURE IDENT	INDEX	REV DATE	EFF DATE
PYONGYANG, (SUNAN - ZKPY)				

TERMINAL CHART CHANGE NOTICES

No Chart Change Notices for Airport ZKPY